

## Product datasheet for **AR09936PU-N**

### Reticulocalbin-2 / RCN2 (26-317, His-tag) Human Protein

#### Product data:

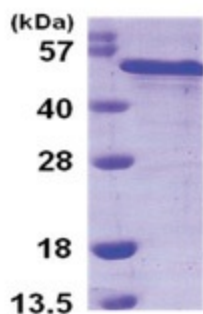
Product Type:	Recombinant Proteins
Description:	Reticulocalbin-2 / RCN2 (26-317, His-tag) human recombinant protein, 50 µg
Species:	Human
Expression Host:	E. coli
Expression cDNA Clone or AA Sequence:	<u>MGSSHHHHHH</u> <u>SSGLVPRGSH</u> <u>MEELHYPLGE</u> RRSYDREAL LGVQEDVDEY VKLGHEEQQK RLQAIKKID LDSDGFLTES ELSSWIQMSF KHYAMQEAKQ QFVEYDKNSD DTVTWDEYNI QMYDRVIDFD ENTALDDAE ESFRKLHLKD KKRFEKANQD SGPGLSLEEF IAFEHPPEEVD YMTEFVIQEA LEEHDKNGDG FVSLEEF LGD YRWDPTANED PEWILVEKDR FVNDYDKDND GRLDPQELLP WVPNNQIA QEEALHLIDE MDLNGDKKLS EEEILENPDL FLTSEATDYG RQLHDDYFYH DEL
Tag:	His-tag
Predicted MW:	36.8 kDa
Concentration:	lot specific
Purity:	>90%
Buffer:	Presentation State: Purified State: Liquid purified protein Buffer System: 20 mM Tris-HCl buffer (pH 8.0) containing 10% glycerol, 1 mM DTT
Preparation:	Liquid purified protein
Protein Description:	Recombinant human RCN2 protein, fused to His-tag at N-terminus, was expressed in E.coli and purified by using conventional chromatography.
Storage:	Store undiluted at 2-8°C for up to two weeks or (in aliquots) at -20°C or -70°C for longer. Avoid repeated freezing and thawing.
Stability:	Shelf life: one year from despatch.
RefSeq:	<u>NP_001258766</u>
Locus ID:	5955
UniProt ID:	<u>Q14257</u> , <u>Q14257-2</u>
Cytogenetics:	15q24.3
Synonyms:	E6BP; ERC-55; ERC55; TCBP49



[View online »](#)

**Summary:**

The protein encoded by this gene is a calcium-binding protein located in the lumen of the ER. The protein contains six conserved regions with similarity to a high affinity Ca(+2)-binding motif, the EF-hand. This gene maps to the same region as type 4 Bardet-Biedl syndrome, suggesting a possible causative role for this gene in the disorder. Alternatively spliced transcript variants encoding different isoforms have been found for this gene. [provided by RefSeq, Nov 2012]

**Product images:**

15% SDS-PAGE (3ug)