

## Product datasheet for **AR09919PU-L**

### Calcyphosin-like protein / CAPSL (1-208, His-tag) Human Protein

#### Product data:

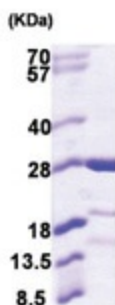
Product Type:	Recombinant Proteins
Description:	Calcyphosin-like protein / CAPSL (1-208, His-tag) human recombinant protein, 0.5 mg
Species:	Human
Expression Host:	E. coli
Expression cDNA Clone or AA Sequence:	<u>MGSSHHHHHH SSGLVPRGSH</u> MAGTARHDRE MAIQAKKKLT TATDPIERLR LQCLARGSAG IKGLGRVFRI MDDDNNRTLD FKEFMKGLND YAVVMEKEEV EELFQRFDKD GNGTIDFNEF LLTLRPPMSR ARKEVIMQAF RKLDKTGDGV ITIEDLREYV NAKHHPKYQN GEWSEEQVFR KFLDNFDSPY DKDGLVTPEE FMNYYAGVSA SIDTDVYFII MMRTAWKL
Tag:	His-tag
Predicted MW:	26.3 kDa
Concentration:	lot specific
Purity:	>90%
Buffer:	Presentation State: Purified State: Liquid purified protein Buffer System: 20 mM Tris-HCl buffer (pH 8.0) containing 0.2M NaCl, 5 mM DTT, 20% glycerol
Preparation:	Liquid purified protein
Protein Description:	Recombinant human CAPSL protein, fused to His-tag at N-terminus, was expressed in E.coli and purified by using conventional chromatography techniques.
Storage:	Store undiluted at 2-8°C for up to two weeks or (in aliquots) at -20°C or -70°C for longer. Avoid repeated freezing and thawing.
Stability:	Shelf life: one year from despatch.
RefSeq:	<u>NP_001036090</u>
Locus ID:	133690
UniProt ID:	<u>Q8WWF8</u>
Cytogenetics:	5p13.2



[View online »](#)

**Summary:**

Calcyphosine-like protein, also known as CAPSL, is a calcium-binding protein containing two calcium-binding motifs (EF-hands). These conserved domains are found in a superfamily of calcium sensors and calcium signal modulators. Furthermore, the CAPSL gene is in the same linkage disequilibrium (LD) block as the IL7R gene. It was reported association between the CAPSL-IL7R locus and type 1 diabetes.

**Product images:**

15% SDS-PAGE (3ug)