

Product datasheet for **AR09885PU-N**

CDC25A (1-524, His-tag) Human Protein

Product data:

Product Type:	Recombinant Proteins
Description:	CDC25A (1-524, His-tag) human recombinant protein, 50 µg
Species:	Human
Expression Host:	E. coli
Expression cDNA Clone or AA Sequence:	<u>MRGSHHHHHH</u> <u>GMASMTGGQQ</u> <u>MGRDLYDDDD</u> <u>KDRWGSMELG</u> PEPHRRRL FACSPPPASQ PVVKALFGAS AAGGLSPVTN LVTMDQLQG LGS DYEQPLE VKNNSNLQRM GSSESTDSGF CLDSPGPLDS KENLENPMRR IHSLPQKLLG CSPALKRSHS DSLDHDIFQL IDPDENKENE AFEFKKPV RP VSRGCLHSHG LQEGKDLFTQ RQNSAPARML SSNERDSESEP GNFIPLFTPQ SPVTATLSDE DDGFVDLLDG ENLKNEEETP SCMASLWTAP LVMRTTNLDN RCKLFDSPSL CSSSTRSVLK RPERSQEESP PGSTKRRKSM SGASPKESTN PEKAHETLHQ SLSLASSPKG TIENILDNDP RDLIGDFSKG YLFHTVAGKH QDLKYISPEI MASVLNGKFA NLIKEFVIID CRYPYEYEGG HIKGAVNLHM EEEVEDFLLK KPIVPTDGKR VIVVFHCEFS SERGPRMCRY VRERDLRGNE YPKLHYPELY VLKGGYKEFF MKCQSYCEPP SYRPMHHEDF KEDLKKFR TK SRTWAGEKSK REMYSRLKKL
Tag:	His-tag
Predicted MW:	63.2 kDa
Concentration:	lot specific
Purity:	>80%
Buffer:	Presentation State: Purified State: Liquid purified protein Buffer System: 20 mM Tris-HCl buffer (pH 8.0) containing 5 mM DTT, 20% glycerol, 0.2M NaCl, 1 mM EDTA
Preparation:	Liquid purified protein
Protein Description:	Recombinant human CDC25A protein, fused to His-tag at N-terminus, was expressed in E.coli and purified by using conventional chromatography techniques.
Storage:	Store undiluted at 2-8°C for up to two weeks or (in aliquots) at -20°C or -70°C for longer. Avoid repeated freezing and thawing.
Stability:	Shelf life: one year from despatch.
RefSeq:	<u>NP_001780</u>
Locus ID:	993



[View online »](#)

UniProt ID: [P30304](#)

Cytogenetics: 3p21.31

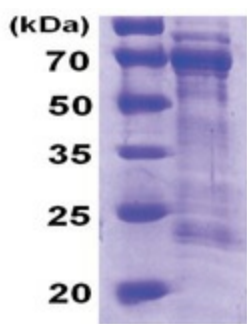
Synonyms: CDC25A2

Summary: CDC25A is a member of the CDC25 family of phosphatases. CDC25A is required for progression from G1 to the S phase of the cell cycle. It activates the cyclin-dependent kinase CDC2 by removing two phosphate groups. CDC25A is specifically degraded in response to DNA damage, which prevents cells with chromosomal abnormalities from progressing through cell division. CDC25A is an oncogene, although its exact role in oncogenesis has not been demonstrated. Two transcript variants encoding different isoforms have been found for this gene. [provided by RefSeq, Jul 2008]

Protein Families: Druggable Genome, Phosphatase

Protein Pathways: Cell cycle, Progesterone-mediated oocyte maturation

Product images:



15% SDS-PAGE (3ug)