

Product datasheet for **AR09881PU-N**

Sorcin / SRI (1-198, His-tag) Human Protein

Product data:

Product Type:	Recombinant Proteins
Description:	Sorcin / SRI (1-198, His-tag) human recombinant protein, 0.1 mg
Species:	Human
Expression Host:	E. coli
Expression cDNA Clone or AA Sequence:	<u>MGSSHHHHHH</u> <u>SSGLVPRGSH</u> <u>MGSMAYPGHP</u> GAGGGYYPGG YGGAPGGPAF PGQTQDPLYG YFAAVAGQDG QIDADELQRC LTQSGIAGGY KPFNLETCLRL MVSMLDRDMS GTMGFNEFKE LWAVLNGWRQ HFISFDTRS GTVDPQELQK ALTTMGFRLS PQAVNSIAKR YSTNGKITFD DYIACCVKLR ALTDSFRRRD TAQQGVNFP YDDFIQCVMS V
Tag:	His-tag
Predicted MW:	24.1 kDa
Concentration:	lot specific
Purity:	>95%
Buffer:	Presentation State: Purified State: Liquid purified protein Buffer System: 20 mM Tris-HCl buffer (pH 8.0) containing 40% glycerol, 0.2M NaCl, 1 mM DTT, 0.1 mM PMSF
Preparation:	Liquid purified protein
Protein Description:	Recombinant human SRI protein, fused to His-tag at N-terminus, was expressed in E.coli and purified by using conventional chromatography.
Storage:	Store undiluted at 2-8°C for up to two weeks or (in aliquots) at -20°C or -70°C for longer. Avoid repeated freezing and thawing.
Stability:	Shelf life: one year from despatch.
RefSeq:	<u>NP_001243820</u>
Locus ID:	6717
UniProt ID:	<u>P30626</u>
Cytogenetics:	7q21.12
Synonyms:	CP-22; CP22; SCN; V19



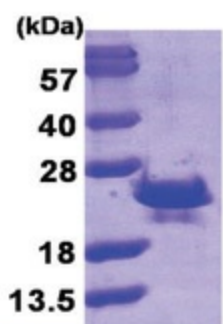
[View online »](#)

Summary:

This gene encodes a calcium-binding protein with multiple E-F hand domains that relocates from the cytoplasm to the sarcoplasmic reticulum in response to elevated calcium levels. In addition to regulating intracellular calcium homeostasis it also modulates excitation-contraction coupling in the heart. Alternative splicing results in multiple transcript variants encoding distinct proteins. Multiple pseudogenes exist for this gene. [provided by RefSeq, Mar 2012]

Protein Families:

Druggable Genome

Product images:

15% SDS-PAGE (3ug)