

## Product datasheet for **AR09866PU-N**

### LYPLA2 (1-231, His-tag) Human Protein

#### Product data:

Product Type:	Recombinant Proteins
Description:	LYPLA2 (1-231, His-tag) human recombinant protein, 0.1 mg
Species:	Human
Expression Host:	E. coli
Expression cDNA Clone or AA Sequence:	<u><a href="#">MGSSHHHHHH SSGLVPRGSH</a></u> MCGNTMSVPL LTDAATVSGA ERETAAVIFL HGLGDTGHSW ADALSTIRLP HVKYICPHAP RIPVTLNMKM VMPSWFDLMG LSPDAPEDEA GIKKAAENIK ALIEHEMKNG IPANRIVLGG FSQGGALSLY TALTCPHPLA GIVALSCWLP LHRAFPQAAN GSAKDLAILQ CHGELDPMVP VRFGALTAEK LRSVTPARV QFKTYPGVMH SSCPQEMAAV KEFLEKLLPP V
Tag:	His-tag
Predicted MW:	26.9 kDa
Concentration:	lot specific
Purity:	>95%
Buffer:	Presentation State: Purified State: Liquid purified protein Buffer System: 20 mM Tris-HCl buffer (pH 8.0) containing 1 mM DTT, 10% glycerol, 100 mM NaCl
Preparation:	Liquid purified protein
Protein Description:	Recombinant human LYPLA2 protein, fused to His-tag at N-terminus, was expressed in E.coli and purified by using conventional chromatography techniques.
Storage:	Store undiluted at 2-8°C for up to two weeks or (in aliquots) at -20°C or -70°C for longer. Avoid repeated freezing and thawing.
Stability:	Shelf life: one year from despatch.
RefSeq:	<u><a href="#">NP_009191</a></u>
Locus ID:	11313
UniProt ID:	<u><a href="#">O95372</a></u> , <u><a href="#">A0A140VJC9</a></u>
Cytogenetics:	1p36.11
Synonyms:	APT-2; APT2; DJ886K2.4

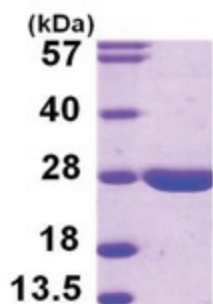


[View online »](#)

**Summary:** Lysophospholipases are enzymes that act on biological membranes to regulate the multifunctional lysophospholipids. There are alternatively spliced transcript variants described for this gene but the full length nature is not known yet. [provided by RefSeq, Jul 2008]

**Protein Pathways:** Glycerophospholipid metabolism

**Product images:**



15% SDS-PAGE (3ug)