

## Product datasheet for **AR09863PU-N**

### MYL9 (1-172, His-tag) Human Protein

#### Product data:

Product Type:	Recombinant Proteins
Description:	MYL9 (1-172, His-tag) human recombinant protein, 50 µg
Species:	Human
Expression Host:	E. coli
Expression cDNA Clone or AA Sequence:	<u>MGSSHHHHHH SSSLVPRGSH</u> MSSKRAKAKT TKKRPQRATS NVFAMFDQSQ IQEFKEAFNM IDQNRDGFID KEDLHDMLAS LGKNPTDEYL EGMMSEAPGP INFTMFLTMF GEKLNGLTDPE DVIRNAFACF DEEASGFIHE DHLRELLTTM GDRFTDDEEVD EMYREAPIDK KGNFNYVEFT RILKHGAKDK DD
Tag:	His-tag
Predicted MW:	21.9 kDa
Concentration:	lot specific
Purity:	>90%
Buffer:	Presentation State: Purified State: Liquid purified protein Buffer System: 20 mM Tris-HCl buffer (pH 8.0) containing 0.1M NaCl, 1 mM DTT, 10% glycerol
Preparation:	Liquid purified protein
Protein Description:	Recombinant human MYL9 protein, fused to His-tag at N-terminus, was expressed in E.coli and purified by using conventional chromatography techniques.
Storage:	Store undiluted at 2-8°C for up to two weeks or (in aliquots) at -20°C or -70°C for longer. Avoid repeated freezing and thawing.
Stability:	Shelf life: one year from despatch.
RefSeq:	<u>NP_006088</u>
Locus ID:	10398
UniProt ID:	<u>P24844</u>
Cytogenetics:	20q11.23
Synonyms:	MLC2, MRLC1, MYRL2, Myosin RLC, MLC-2C, LC20, smooth muscle

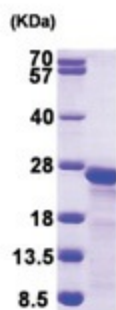


[View online »](#)

**Summary:** Myosin, a structural component of muscle, consists of two heavy chains and four light chains. The protein encoded by this gene is a myosin light chain that may regulate muscle contraction by modulating the ATPase activity of myosin heads. The encoded protein binds calcium and is activated by myosin light chain kinase. Two transcript variants encoding different isoforms have been found for this gene. [provided by RefSeq, Jul 2008]

**Protein Pathways:** Focal adhesion, Leukocyte transendothelial migration, Regulation of actin cytoskeleton, Tight junction, Vascular smooth muscle contraction

**Product images:**



15% SDS-PAGE (3ug)