

## Product datasheet for **AR09858PU-N**

### **RAB6B (1-208, His-tag) Human Protein**

#### Product data:

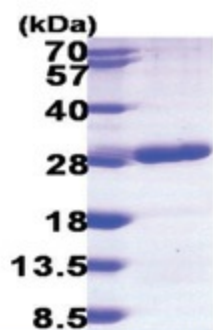
Product Type:	Recombinant Proteins
Description:	RAB6B (1-208, His-tag) human recombinant protein, 0.1 mg
Species:	Human
Expression Host:	E. coli
Expression cDNA Clone or AA Sequence:	<u>MGSSHHHHHH SSSLVPRGSH</u> MSAGGDFGNP LRFKLVFLG EQSVGKTSLI TRFMYSFDN TYQATIGIDF LSKTMYLEDR TVRLQLWDTA GQERFRSLIP SYIRDSTVAV VYDITNLNS FQQTSKWIDD VRTERGSDVI IMLVGNKTDL ADKRQITIEE GEQRAKELSV MFIETSAKTG YNVKQLFRRV ASALPGMENV QEKSKEGMID IKLDKPQPEP ASEGGCSC
Tag:	His-tag
Predicted MW:	25.6 kDa
Concentration:	lot specific
Purity:	>95%
Buffer:	Presentation State: Purified State: Liquid purified protein Buffer System: 20 mM Tris-HCl buffer (pH 8.0) containing 20% glycerol, 0.1M NaCl, 1 mM DTT
Preparation:	Liquid purified protein
Protein Description:	Recombinant human RAB6B protein, fused to His-tag at N-terminus, was expressed in E.coli and purified by using conventional chromatography.
Storage:	Store undiluted at 2-8°C for up to two weeks or (in aliquots) at -20°C or -70°C for longer. Avoid repeated freezing and thawing.
Stability:	Shelf life: one year from despatch.
RefSeq:	<u>NP_057661</u>
Locus ID:	51560
UniProt ID:	<u>Q9NRW1</u>
Cytogenetics:	3q22.1
Summary:	Seems to have a role in retrograde membrane traffic at the level of the Golgi complex. May function in retrograde transport in neuronal cells.[UniProtKB/Swiss-Prot Function]



[View online »](#)

Protein Families: Druggable Genome

**Product images:**



15% SDS-PAGE (3ug)