

## Product datasheet for **AR09847PU-N**

### **RAB21 (18-222, His-tag) Human Protein**

#### Product data:

Product Type:	Recombinant Proteins
Description:	RAB21 (18-222, His-tag) human recombinant protein, 50 µg
Species:	Human
Expression Host:	E. coli
Expression cDNA Clone or AA Sequence:	<u>MRGSHHHHHH</u> <u>GMASMTGGQQ</u> <u>MGRDLYDDDD</u> <u>KDRWGSMYSF</u> <u>KVLLGEGCV</u> <u>GKTSVLVRYC</u> ENKFNDKHIT TLQASFLTKK LNIGGKRVNL AIWDTAGQER FHALGPIYYR DSNAILVYD ITDEDSFQKV KNWVKELRKM LGNEICLCIV GNKIDLEKER HVSIQEAEYS AESVGAKHYH TSAKQNKGIE ELFLDLCKRM IETAQVDERA KGNGSSQPGT ARRGVQIIDD EPQAQTSGGG CC
Tag:	His-tag
Predicted MW:	27.1 kDa
Concentration:	lot specific
Purity:	>90%
Buffer:	Presentation State: Purified State: Liquid purified protein Buffer System: 20 mM Tris-HCl buffer (pH 8.0) containing 10% glycerol, 2 mM DTT, 200 mM NaCl, 1 mM PMSF
Preparation:	Liquid purified protein
Protein Description:	Recombinant human RAB21 protein, fused to His-tag at N-terminus, was expressed in E.coli and purified by using conventional chromatography techniques.
Storage:	Store undiluted at 2-8°C for up to two weeks or (in aliquots) at -20°C or -70°C for longer. Avoid repeated freezing and thawing.
Stability:	Shelf life: one year from despatch.
RefSeq:	<u>NP_055814</u>
Locus ID:	23011
UniProt ID:	<u>Q9UL25</u> , <u>A0A024RBA9</u>
Cytogenetics:	12q21.1



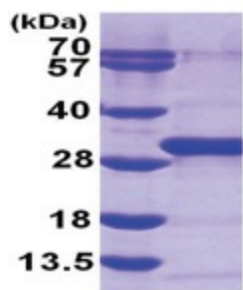
[View online »](#)

**Summary:**

This gene belongs to the Rab family of monomeric GTPases, which are involved in the control of cellular membrane traffic. The encoded protein plays a role in the targeted trafficking of integrins via its association with integrin alpha tails. As a consequence, the encoded protein is involved in the regulation of cell adhesion and migration. Expression of this gene is associated with a poor prognosis for glioma patients. This gene is downregulated by the tumor suppressor miR-200b, and miRNA-200b is itself downregulated in glioma tissues. [provided by RefSeq, Nov 2015]

**Protein Families:**

Druggable Genome

**Product images:**

15% SDS-PAGE (3ug)