

Product datasheet for **AR09828PU-L**

GRAP2 (1-330, His-tag) Human Protein

Product data:

Product Type:	Recombinant Proteins
Description:	GRAP2 (1-330, His-tag) human recombinant protein, 0.25 mg
Species:	Human
Expression Host:	E. coli
Expression cDNA Clone or AA Sequence:	<u>MGSSHHHHHH SSGLVPRGSH</u> MEAVAKFDFT ASGEDELSFH TGDVLKILSN QEEWFKAELG SQEGYVPKNF IDIQFPKWFH EGLSRHQAEN LLMGKEVGFF IIRASQSSPG DFSISVRHED DVQHFVKMRD NKGNYFLWTE KFPSLNKLVD YYRTNSISRQ KQIFLRDRTR EDQGHRGNSL DRRSQGGPHL SGAVGEEIRP SMNRKLSDHP PTLPLQQHQH QPQPQYAPA PQQQQPPQQ RYLQHFFFHQ ERGGSLDIN DGHC GTGLGS EMNAALMHRR HTDPVQLQAA GRVRWARALY DFEALDEL GFHSGEVVEV LDSSNPSWWT GRLHNKLGLF PANYVPMTR
Tag:	His-tag
Concentration:	lot specific
Purity:	>90%
Buffer:	Presentation State: Purified State: Liquid purified protein Buffer System: 20 mM Tris-HCl buffer (pH 8.0) containing 0.2M NaCl, 5 mM DTT, 1 mM EDTA, 30% glycerol
Preparation:	Liquid purified protein
Protein Description:	Recombinant human GRAP2 protein, fused to His-tag at N-terminus, was expressed in E.coli and purified by using conventional chromatography techniques.
Storage:	Store undiluted at 2-8°C for up to two weeks or (in aliquots) at -20°C or -70°C for longer. Avoid repeated freezing and thawing.
Stability:	Shelf life: one year from despatch.
RefSeq:	<u>NP_001278753</u>
Locus ID:	9402
UniProt ID:	<u>O75791, Q6F114</u>
Cytogenetics:	22q13.1
Synonyms:	GADS; GRAP-2; GRB2L; GRBLG; GrbX; Grf40; GRID; GRPL; Mona; P38



[View online »](#)

Summary:

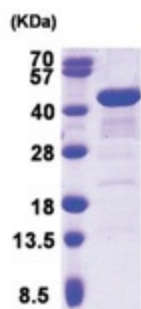
This gene encodes a member of the GRB2/Sem5/Drk family. This member is an adaptor-like protein involved in leukocyte-specific protein-tyrosine kinase signaling. Like its related family member, GRB2-related adaptor protein (GRAP), this protein contains an SH2 domain flanked by two SH3 domains. This protein interacts with other proteins, such as GRB2-associated binding protein 1 (GAB1) and the SLP-76 leukocyte protein (LCP2), through its SH3 domains. Multiple alternatively spliced transcript variants encoding distinct isoforms have been found for this gene. [provided by RefSeq, Apr 2014]

Protein Families:

Druggable Genome

Protein Pathways:

T cell receptor signaling pathway

Product images:

15% SDS-PAGE (3ug)