

Product datasheet for **AR09817PU-N**

RAB7A / RAB7 (1-207, His-tag) Human Protein

Product data:

Product Type:	Recombinant Proteins
Description:	RAB7A / RAB7 (1-207, His-tag) human recombinant protein, 0.1 mg
Species:	Human
Expression Host:	E. coli
Expression cDNA Clone or AA Sequence:	<u>MGSSHHHHHH SSGLVPRGSH</u> MTSRKKVLLK VIILGDSG VG KTSLMNQYVN KKFSNQYKAT IGADFLTKEV MVDDRLVTMQ IWDTAGQERF QSLGVAFYRG ADCCVLVFDV TAPNTFKTLD SWRDEFLIQA SPRDPENFPF VVLGNKIDLE NRQVATKRAQ AWCYSKNNIP YFETSAKEAI NVEQAFQTIA RNALKQETEV ELYNEFPEPI KLDKNDRAKA SAESCSC
Tag:	His-tag
Predicted MW:	25.6 kDa
Concentration:	lot specific
Purity:	>90% by SDS - PAGE
Buffer:	Presentation State: Purified State: Liquid purified protein Buffer System: 20 mM Tris-HCl buffer (pH 8.0) containing 1 mM DTT, 30% glycerol, 100 mM NaCl
Preparation:	Liquid purified protein
Protein Description:	Recombinant human RAB7A protein, fused to His-tag at N-terminus, was expressed in E.coli and purified by using conventional chromatography techniques.
Storage:	Store undiluted at 2-8°C for up to two weeks or (in aliquots) at -20°C or -70°C for longer. Avoid repeated freezing and thawing.
Stability:	Shelf life: one year from despatch.
RefSeq:	<u>NP_004628</u>
Locus ID:	7879
UniProt ID:	<u>P51149</u> , <u>A0A158RFU6</u>
Cytogenetics:	3q21.3
Synonyms:	CMT2B; PRO2706; RAB7



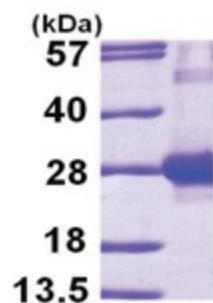
[View online »](#)

Summary:

RAB family members are small, RAS-related GTP-binding proteins that are important regulators of vesicular transport. Each RAB protein targets multiple proteins that act in exocytic / endocytic pathways. This gene encodes a RAB family member that regulates vesicle traffic in the late endosomes and also from late endosomes to lysosomes. This encoded protein is also involved in the cellular vacuolation of the VacA cytotoxin of *Helicobacter pylori*. Mutations at highly conserved amino acid residues in this gene have caused some forms of Charcot-Marie-Tooth (CMT) type 2 neuropathies. [provided by RefSeq, Jul 2008]

Protein Families:

Druggable Genome

Product images:

15% SDS-PAGE (3ug)