

Product datasheet for **AR09813PU-N**

Tropomyosin-2 (TPM2) (1-284, His-tag) Human Protein

Product data:

Product Type:	Recombinant Proteins
Description:	Tropomyosin-2 (TPM2) (1-284, His-tag) human recombinant protein, 50 µg
Species:	Human
Expression Host:	E. coli
Expression cDNA Clone or AA Sequence:	<u>MGSSHHHHHH SSGLVPRGSH</u> MDAIKKKMQM LKLDKENAID RAEQAEADKK QAEDRCKQLE EEQQALQKKL KGTEDEVEKY SESVKEAQEK LEQAEKKATD AADVASLNR RIQLVEEELD RAQERLATAL QKLEEAEKAA DESERGMKVI ENRAMKDEEK MELQEMQLKE AKHIAEDSDR KYEEVARKLV ILEGELERSE ERAEVAESRA RQLEEEELRTM DQALKSLMAS EEEYSTKEDK YEEEEIKLEE KLKEAETRAE FAERSVAKLE KTIDDLEETL ASAKEENVEI HQTLDQTLLE LNNL
Tag:	His-tag
Predicted MW:	35.1 kDa
Concentration:	lot specific
Purity:	>90%
Buffer:	Presentation State: Purified State: Liquid purified protein Buffer System: 20 mM Tris-HCl buffer (pH 8.0) containing 1 mM DTT, 30% glycerol, 100 mM NaCl
Preparation:	Liquid purified protein
Protein Description:	Recombinant human TPM2 protein, fused to His-tag at N-terminus, was expressed in E.coli and purified by using conventional chromatography techniques.
Storage:	Store undiluted at 2-8°C for up to two weeks or (in aliquots) at -20°C or -70°C for longer. Avoid repeated freezing and thawing.
Stability:	Shelf life: one year from despatch.
RefSeq:	<u>NP_001288155</u>
Locus ID:	7169
UniProt ID:	<u>Q5TCU3, V9HW25</u>
Cytogenetics:	9p13.3
Synonyms:	AMCD1; DA1; DA2B; DA2B4; HEL-S-273; NEM4; TMSB



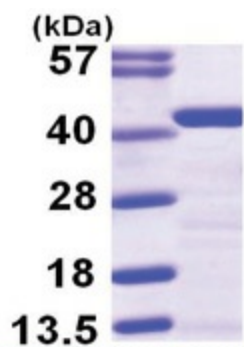
[View online »](#)

Summary:

This gene encodes beta-tropomyosin, a member of the actin filament binding protein family, and mainly expressed in slow, type 1 muscle fibers. Mutations in this gene can alter the expression of other sarcomeric tropomyosin proteins, and cause cap disease, nemaline myopathy and distal arthrogyriposis syndromes. Alternatively spliced transcript variants encoding different isoforms have been found for this gene.[provided by RefSeq, Mar 2009]

Protein Pathways:

Cardiac muscle contraction, Dilated cardiomyopathy, Hypertrophic cardiomyopathy (HCM)

Product images:

15% SDS-PAGE (3ug)