

Product datasheet for **AR09806PU-L**

MOBKL1B (1-216, His-tag) Human Protein

Product data:

Product Type:	Recombinant Proteins
Description:	MOBKL1B (1-216, His-tag) human recombinant protein, 0.5 mg
Species:	Human
Expression Host:	E. coli
Expression cDNA Clone or AA Sequence:	<u>MGSSHHHHHH SSGLVPRGSH</u> MSFLFSSRSS KTFKPKKNIP EGS HQYELLK HAEATLGSGN LRQAVMLPEG EDLNEWIAVN TVDFFNQINM LYGTITEFCT EASCPVMSAG PRYEYHWADG TNIKKPIKCS APKYIDYLMT WVQDQLDDET LFPSKIGVPF PKNFMSVAKT ILKRLFRVYA HIYHQHFDSV MQLQEEAHLN TSKHFIFV QEFNLIDRRE LAPLQELIEK LGSKDR
Tag:	His-tag
Predicted MW:	27.2 kDa
Concentration:	lot specific
Purity:	>95%
Buffer:	Presentation State: Purified State: Liquid purified protein Buffer System: 20 mM Tris-HCl buffer (pH 8.0) containing 0.2M NaCl, 5 mM DTT, 30% glycerol
Preparation:	Liquid purified protein
Protein Description:	Recombinant human MOBKL1B protein, fused to His-tag at N-terminus, was expressed in E.coli and purified by using conventional chromatography techniques.
Storage:	Store undiluted at 2-8°C for up to two weeks or (in aliquots) at -20°C or -70°C for longer. Avoid repeated freezing and thawing.
Stability:	Shelf life: one year from despatch.
RefSeq:	<u>NP_001304039</u>
Locus ID:	55233
UniProt ID:	<u>Q9H8S9</u>
Cytogenetics:	2p13.1
Synonyms:	C2orf6; MATS1; MOB1; Mob4B; MOBK1B; MOBKL1B



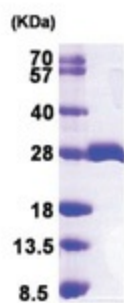
[View online »](#)

Summary:

The protein encoded by this gene is a component of the Hippo signaling pathway, which controls organ size and tumor growth by enhancing apoptosis. Loss of the encoded protein results in cell proliferation and cancer formation. The encoded protein is also involved in the control of microtubule stability during cytokinesis. Several transcript variants encoding different isoforms have been found for this gene. [provided by RefSeq, Nov 2015]

Protein Families:

Druggable Genome

Product images:

15% SDS-PAGE (3ug)