

Product datasheet for **AR09796PU-L**

NELF-A (1-539, His-tag) Human Protein

Product data:

Product Type:	Recombinant Proteins
Description:	NELF-A (1-539, His-tag) human recombinant protein, 0.25 mg
Species:	Human
Expression Host:	E. coli
Expression cDNA Clone or AA Sequence:	MGSSHHHHHH SSGLVPRGSH MPGQRRALSP KMASMRESDT GLWLHNKLG A TDELWAPPSI ASLLTAAVID NIRLCFHGLS SAVKLLKLLG TLHLPRRTVD EMKGALMEII QLASLSDPW VLMVADILKS FPDTGSLNLE LEEQNPVQD ILGELREKVG ECEASAMLPL ECQYLNKNAL TLAGPLTPP VKHFQLKRKP KSATLRAELL QKSTETAQQL KRSAGVPFHA KGRGLLRKMD TTTPLKGIPK QAPFRSPTAP SVFSPTGNRT PIPPSRTLLR KERGVKLLDI SELDMVGAGR EAKRRRKTLD AEWVEKPAKE ETVENATPD YAAGLVSTQK LGSLNNEPAL PSTSYLPSTP SVVPASSYIP SSETPPAPSS REASRPPEEP SAPSPTLPAQ FKQRAPMYNS GLSPATPTPA APTSPLPTT PPAVAPTTQT PPVAMVAPQT QAPAQQQPKK NLSLTREQMF AAQEMFKTAN KVTRPEKALI LGFMAGSREN PCQEQQDVIQ IKLSEHTEDL PKADGQGSTT MLVDTV FEMN YATGQWTRFK KYKPMTNVS
Tag:	His-tag
Predicted MW:	60.6 kDa
Concentration:	lot specific
Purity:	>85%
Buffer:	Presentation State: Purified State: Liquid purified protein Buffer System: 20 mM Tris-HCl buffer (pH 8.0) containing 0.2M NaCl, 5 mM DTT, 1 mM EDTA, 20% glycerol
Preparation:	Liquid purified protein
Protein Description:	Recombinant human NELFA (WHSC2) protein, fused to His-tag at N-terminus, was expressed in E.coli and purified by using conventional chromatography techniques.
Storage:	Store undiluted at 2-8°C for up to two weeks or (in aliquots) at -20°C or -70°C for longer. Avoid repeated freezing and thawing.
Stability:	Shelf life: one year from despatch.
RefSeq:	NP_005654
Locus ID:	7469



[View online »](#)

UniProt ID: [Q9H3P2](#), [A0A0C4DFX9](#)

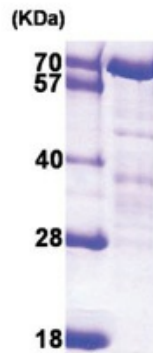
Cytogenetics: 4p16.3

Synonyms: NELF-A; P/OKcl.15; WHSC2

Summary: This gene is expressed ubiquitously with higher levels in fetal than in adult tissues. It encodes a protein sharing 93% sequence identity with the mouse protein. Wolf-Hirschhorn syndrome (WHS) is a malformation syndrome associated with a hemizygous deletion of the distal short arm of chromosome 4. This gene is mapped to the 165 kb WHS critical region, and may play a role in the phenotype of the WHS or Pitt-Rogers-Danks syndrome. The encoded protein is found to be capable of reacting with HLA-A2-restricted and tumor-specific cytotoxic T lymphocytes, suggesting a target for use in specific immunotherapy for a large number of cancer patients. This protein has also been shown to be a member of the NELF (negative elongation factor) protein complex that participates in the regulation of RNA polymerase II transcription elongation. [provided by RefSeq, Jul 2008]

Protein Families: Transcription Factors

Product images:



15% SDS-PAGE (3ug)