

## Product datasheet for **AR09776PU-N**

### Insulin-like growth factor II / IGF2 (25-91) Human Protein

#### Product data:

Product Type:	Recombinant Proteins
Description:	Insulin-like growth factor II / IGF2 (25-91) human recombinant protein, 50 µg
Species:	Human
Expression Host:	E. coli
Expression cDNA Clone or AA Sequence:	MAYRPSETLC GGELVDTLQF VCGDRGFYFS RPASRVSRRS RGIVEECCFR SCDLALLETY CATPAKSE
Predicted MW:	7.6 kDa
Concentration:	lot specific
Purity:	>90%
Buffer:	Presentation State: Purified State: Liquid purified peptide Buffer System: PBS (pH 7.4) containing 10% glycerol
Preparation:	Liquid purified peptide
Protein Description:	Recombinant human IGF2 was expressed in E.coli and purified by conventional chromatography, after refolding of the isolated inclusion bodies in a renaturation buffer.
Storage:	Store undiluted at 2-8°C for up to two weeks or (in aliquots) at -20°C or -70°C for longer. Avoid repeated freezing and thawing.
Stability:	Shelf life: one year from despatch.
RefSeq:	<a href="#">NP_000603</a>
Locus ID:	3481
UniProt ID:	<a href="#">P01344</a> , <a href="#">C9JAF2</a>
Cytogenetics:	11p15.5
Synonyms:	C11orf43; GRDF; IGF-II; PP9974; SRS3



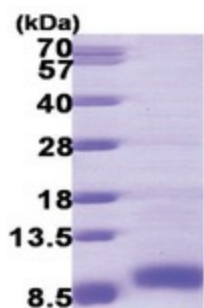
[View online »](#)

**Summary:**

This gene encodes a member of the insulin family of polypeptide growth factors, which are involved in development and growth. It is an imprinted gene, expressed only from the paternal allele, and epigenetic changes at this locus are associated with Wilms tumour, Beckwith-Wiedemann syndrome, rhabdomyosarcoma, and Silver-Russell syndrome. A read-through INS-IGF2 gene exists, whose 5' region overlaps the INS gene and the 3' region overlaps this gene. Alternatively spliced transcript variants encoding different isoforms have been found for this gene. [provided by RefSeq, Oct 2010]

**Protein Families:**

Druggable Genome, ES Cell Differentiation/IPS, Secreted Protein

**Product images:**

15% SDS-PAGE (3ug)