

## Product datasheet for **AR09773PU-L**

### MOBKL3 (1-225, His-tag) Human Protein

#### Product data:

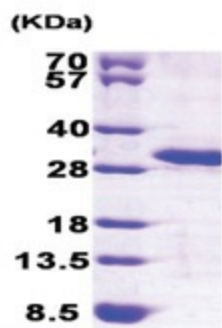
Product Type:	Recombinant Proteins
Description:	MOBKL3 (1-225, His-tag) human recombinant protein, 0.25 mg
Species:	Human
Expression Host:	E. coli
Expression cDNA Clone or AA Sequence:	<u>MGSSHHHHHH SSGLVPRGSH</u> MVMAEGTAVL RRNRPGTKAQ DFYNWPDESF DEMDSTLAVQ QYIQNIRAD CSNIDKILEP PEGQDEGVWK YEHLRQFCLE LNGLAVKLQS ECHPDTCTQM TATEQWIFLC AAHKTPKECP AIDYTRHTLD GAACLLNSNK YFPSRVSIKE SSVAKLGSVC RRIYRIFSHA YFHHRQIFDE YENETFLCHR FTKFVMKYNL MSKDNLIVPI LEEEVQNSVS GESEA
Tag:	His-tag
Predicted MW:	28.1 kDa
Concentration:	lot specific
Purity:	>95%
Buffer:	Presentation State: Purified State: Liquid purified protein Buffer System: 20 mM Tris-HCl buffer (pH 8.0) containing 0.2M NaCl, 5 mM DTT, 10% glycerol
Preparation:	Liquid purified protein
Protein Description:	Recombinant human MOBKL3 protein, fused to His-tag at N-terminus, was expressed in E.coli and purified by using conventional chromatography techniques.
Storage:	Store undiluted at 2-8°C for up to two weeks or (in aliquots) at -20°C or -70°C for longer. Avoid repeated freezing and thawing.
Stability:	Shelf life: one year from despatch.
RefSeq:	<u>NP_001094289</u>
Locus ID:	25843
UniProt ID:	<u>Q9Y3A3</u>
Cytogenetics:	2q33.1
Synonyms:	2C4D; CGI-95; MOB1; MOB3; MOBKL3; PHOCN; PREI3



[View online »](#)

**Summary:**

This gene was identified based on its similarity with the mouse counterpart. Studies of the mouse counterpart suggest that the expression of this gene may be regulated during oocyte maturation and preimplantation following zygotic gene activation. Alternatively spliced transcript variants encoding distinct isoforms have been observed. Naturally occurring read-through transcription occurs between this locus and the neighboring locus HSPE1.[provided by RefSeq, Feb 2011]

**Product images:**

15% SDS-PAGE (3ug)