

Product datasheet for **AR09762PU-L**

RALA / RAL (1-203, His-tag) Human Protein

Product data:

Product Type:	Recombinant Proteins
Description:	RALA / RAL (1-203, His-tag) human recombinant protein, 0.5 mg
Species:	Human
Expression Host:	E. coli
Expression cDNA Clone or AA Sequence:	<u>MGSSHHHHHH SSGLVPRGSH MGSHEMAANKP KGQNSLALHK VIMVGSGGVG KSALTLQFMY DEFVEDYEPT KADSYRKKVV LDGEEVQIDI LDTAGQEDYA AIRDNYFRSG EGFLCVFSIT EMESFAATAD FREQILRVKE DENVPFLLVG NKSDLEDKRQ VSVEEAKNRA EQWNVNYVET SAKTRANVVK VFFDLMREIR ARKMEDSKEK NGKKKRKSLA KRIRERC</u>
Tag:	His-tag
Predicted MW:	25.8 kDa
Concentration:	lot specific
Purity:	>90%
Buffer:	Presentation State: Purified State: Liquid purified protein Buffer System: 20 mM Tris-HCl buffer (pH 8.0) containing 10% glycerol, 2 mM DTT, 100 mM NaCl, 0.1 mM PMSF
Preparation:	Liquid purified protein
Protein Description:	Recombinant human RALA protein, fused to His-tag at N-terminus, was expressed in E.coli and purified by using conventional chromatography techniques.
Storage:	Store undiluted at 2-8°C for up to two weeks or (in aliquots) at -20°C or -70°C for longer. Avoid repeated freezing and thawing.
Stability:	Shelf life: one year from despatch.
RefSeq:	<u>NP_005393</u>
Locus ID:	5898
UniProt ID:	<u>P11233</u>
Cytogenetics:	7p14.1
Synonyms:	HINCONS; RAL



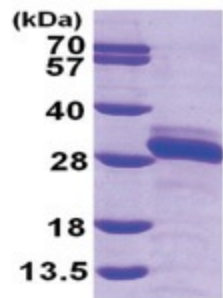
[View online »](#)

Summary: The product of this gene belongs to the small GTPase superfamily, Ras family of proteins. GTP-binding proteins mediate the transmembrane signaling initiated by the occupancy of certain cell surface receptors. This gene encodes a low molecular mass ras-like GTP-binding protein that shares about 50% similarity with other ras proteins. [provided by RefSeq, Jul 2008]

Protein Families: Druggable Genome

Protein Pathways: Pancreatic cancer, Pathways in cancer

Product images:



15% SDS-PAGE (3ug)