

Product datasheet for **AR09687PU-L**

PSME1 (1-249, His-tag) Human Protein

Product data:

Product Type:	Recombinant Proteins
Description:	PSME1 (1-249, His-tag) human recombinant protein, 0.25 mg
Species:	Human
Expression Host:	E. coli
Expression cDNA Clone or AA Sequence:	<u>MGSSHHHHHH SGLVPRGSH</u> MAMLRVQPEA QAKVDVFRED LCTKTENLLG SYFPKKISEL DAFLKEPALN EANLSNLKAP LDIPVPDPVK EKEKEERKKQ QEKEDKDEKK KGEDEDKGPP CGPVNCNEKI VLLQRLKPE IKDVIEQLNL VTTWLQLQIP RIEDGNNFGV AVQEKVFELM TSLHTKLEGF HTQISKYFSE RGDVTKAAK QPHVGDYRQL VHELDEAEYR DIRLMVMEIR NAYAVLYDII LKNFEKLKKP RGETKGMIIY
Tag:	His-tag
Predicted MW:	30.8 kDa
Concentration:	lot specific
Purity:	>90%
Buffer:	Presentation State: Purified State: Liquid purified protein Buffer System: 20 mM Tris-HCl buffer (pH 8.0) containing 10% glycerol, 0.1M NaCl
Preparation:	Liquid purified protein
Protein Description:	Recombinant human PSME1 protein, fused to His-tag at N-terminus, was expressed in E.coli and purified by using conventional chromatography techniques.
Storage:	Store undiluted at 2-8°C for up to two weeks or (in aliquots) at -20°C or -70°C for longer. Avoid repeated freezing and thawing.
Stability:	Shelf life: one year from despatch.
RefSeq:	<u>NP_001268457</u>
Locus ID:	5720
UniProt ID:	<u>Q06323</u>
Cytogenetics:	14q12
Synonyms:	PSME-1, IFI5111, Proteasome activator complex subunit 1, Proteasome activator 28 subunit alpha, PA28alpha, PA28a, 11S regulator complex subunit alpha, REG-alpha, IGUP I-5111



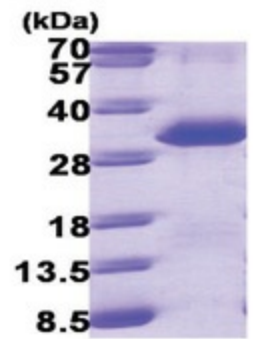
[View online »](#)

Summary:

The 26S proteasome is a multicatalytic proteinase complex with a highly ordered structure composed of 2 complexes, a 20S core and a 19S regulator. The 20S core is composed of 4 rings of 28 non-identical subunits; 2 rings are composed of 7 alpha subunits and 2 rings are composed of 7 beta subunits. The 19S regulator is composed of a base, which contains 6 ATPase subunits and 2 non-ATPase subunits, and a lid, which contains up to 10 non-ATPase subunits. Proteasomes are distributed throughout eukaryotic cells at a high concentration and cleave peptides in an ATP/ubiquitin-dependent process in a non-lysosomal pathway. An essential function of a modified proteasome, the immunoproteasome, is the processing of class I MHC peptides. The immunoproteasome contains an alternate regulator, referred to as the 11S regulator or PA28, that replaces the 19S regulator. Three subunits (alpha, beta and gamma) of the 11S regulator have been identified. This gene encodes the alpha subunit of the 11S regulator, one of the two 11S subunits that is induced by gamma-interferon. Three alpha and three beta subunits combine to form a heterohexameric ring. Alternative splicing results in multiple transcript variants. [provided by RefSeq, Jul 2013]

Protein Pathways:

Antigen processing and presentation, Proteasome

Product images:

15% SDS-PAGE (3ug)