

## Product datasheet for **AR09684PU-N**

### MAPRE3 (1-281, His-tag) Human Protein

#### Product data:

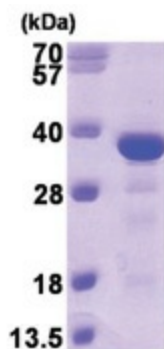
Product Type:	Recombinant Proteins
Description:	MAPRE3 (1-281, His-tag) human recombinant protein, 0.1 mg
Species:	Human
Expression Host:	E. coli
Expression cDNA Clone or AA Sequence:	<u>MGSSHHHHHH SSGLVPRGSH</u> MAVNVYSTSV TSENLSRHDM LAWVNDLHL NYTKIEQLCS GAAYCQFMDM LFPGCVHLRK VKFQAKLEHE YIHNFKVLQA AFKKGVDKI IPVEKLVKGG FQDNFEFIQW FKKFFDANYD GKDYNPLLAR QGQDVAPPPN PGDQIFNKS KLIQTAVPQR TSPTGPKNMQ TSGRLSNVAP PCILRKNPPS ARNGGHETDA QILELNQQLV DLKLTVDGLE KERDFYFSKL RDIELICQEH ESENSPVISG IIGILYATEE GFAPPEDDEI EEHQEDQDE Y
Tag:	His-tag
Predicted MW:	34.1 kDa
Concentration:	lot specific
Purity:	>90%
Buffer:	Presentation State: Purified State: Liquid purified protein Buffer System: 20 mM Tris-HCl buffer (pH 8.0) containing 10% glycerol, 2 mM DTT, 0.1M NaCl
Preparation:	Liquid purified protein
Protein Description:	Recombinant human MAPRE3 protein, fused to His-tag at N-terminus, was expressed in E.coli and purified by using conventional chromatography techniques.
Storage:	Store undiluted at 2-8°C for up to two weeks or (in aliquots) at -20°C or -70°C for longer. Avoid repeated freezing and thawing.
Stability:	Shelf life: one year from despatch.
RefSeq:	<u>NP_001289979</u>
Locus ID:	22924
UniProt ID:	<u>Q9UPY8</u>
Cytogenetics:	2p23.3
Synonyms:	EB3; EBF3; EBF3-S; RP3



[View online »](#)

**Summary:**

The protein encoded by this gene is a member of the RP/EB family of genes. The protein localizes to the cytoplasmic microtubule network and binds APCL, a homolog of the adenomatous polyposis coli tumor suppressor gene. [provided by RefSeq, Jul 2008]

**Product images:**

15% SDS-PAGE (3ug)