

Product datasheet for **AR09618PU-L**

Galectin-2 (1-132, His-tag) Human Protein

Product data:

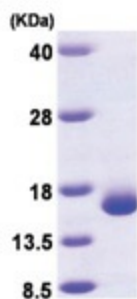
Product Type:	Recombinant Proteins
Description:	Galectin-2 (1-132, His-tag) human recombinant protein, 0.5 mg
Species:	Human
Expression Host:	E. coli
Expression cDNA Clone or AA Sequence:	<u>MGSSHHHHHH SSGLVPRGSH</u> MTGELEVKNM DMKPGSTLKI TGSADGTDG FVINLGQGTDLKLNLFNPRF SESTIVCNLS DGSNWGQEQR EDHLCFSPGS EVKFTVTFES DKFKVKLPDGHELTSFNRLG HSHLSYLSVR GGFNMSSFKL KE
Tag:	His-tag
Predicted MW:	16.8 kDa
Concentration:	lot specific
Purity:	>95% by SDS - PAGE
Buffer:	Presentation State: Purified State: Liquid purified protein Buffer System: 20 mM Tris-HCl buffer (pH 8.0) containing 0.2M NaCl, 1 mM DTT, 10% glycerol
Preparation:	Liquid purified protein
Protein Description:	Recombinant human Galectin 2 protein, fused to His-tag at N-terminus, was expressed in E.coli and purified by using conventional chromatography techniques.
Storage:	Store undiluted at 2-8°C for up to two weeks or (in aliquots) at -20°C or -70°C for longer. Avoid repeated freezing and thawing.
Stability:	Shelf life: one year from despatch.
RefSeq:	<u>NP_006489</u>
Locus ID:	3957
UniProt ID:	<u>P05162</u>
Cytogenetics:	22q13.1
Synonyms:	LGALS2, Lactose-binding lectin 2, S-Lac lectin 2, HL14



[View online »](#)

Summary:

The protein encoded by this gene is a soluble beta-galactoside binding lectin. The encoded protein is found as a homodimer and can bind to lymphotoxin-alpha. A single nucleotide polymorphism in an intron of this gene can alter the transcriptional level of the protein, with a resultant increased risk of myocardial infarction. [provided by RefSeq, Jul 2008]

Product images:

15% SDS-PAGE (3ug)