

Product datasheet for **AR09610PU-L**

Reticulocalbin-1 / RCN1 (30-331, His-tag) Human Protein

Product data:

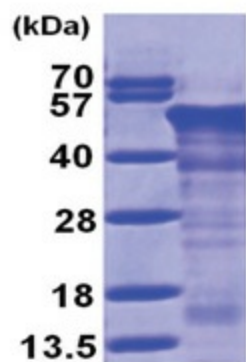
Product Type:	Recombinant Proteins
Description:	Reticulocalbin-1 / RCN1 (30-331, His-tag) human recombinant protein, 0.25 mg
Species:	Human
Expression Host:	E. coli
Tag:	His-tag
Predicted MW:	40.4 kDa
Concentration:	lot specific
Purity:	>80% by SDS - PAGE
Buffer:	Presentation State: Purified State: Liquid purified protein Buffer System: 20 mM Tris-HCl buffer (pH 8.0) containing 10% glycerol, 1 mM DTT, 100 mM NaCl
Preparation:	Liquid purified protein
Protein Description:	Recombinant human RCN1 protein, fused to His-tag at N-terminus, was expressed in E.coli and purified by using conventional chromatography techniques.
Storage:	Store undiluted at 2-8°C for up to two weeks or (in aliquots) at -20°C or -70°C for longer. Avoid repeated freezing and thawing.
Stability:	Shelf life: one year from despatch.
RefSeq:	NP_002892
Locus ID:	5954
UniProt ID:	Q15293 , V9HW95
Cytogenetics:	11p13
Synonyms:	HEL-S-84; PIG20; RCAL; RCN



[View online »](#)

Summary:

Reticulocalbin 1 is a calcium-binding protein located in the lumen of the ER. The protein contains six conserved regions with similarity to a high affinity Ca(+2)-binding motif, the EF-hand. High conservation of amino acid residues outside of these motifs, in comparison to mouse reticulocalbin, is consistent with a possible biochemical function besides that of calcium binding. In human endothelial and prostate cancer cell lines this protein localizes to the plasma membrane.[provided by RefSeq, Jan 2009]

Product images:

15% SDS-PAGE (3ug)