

Product datasheet for **AR09581PU-L**

ARF1 (1-181, His-tag) Human Protein

Product data:

| | |
|---------------------------------------|---|
| Product Type: | Recombinant Proteins |
| Description: | ARF1 (1-181, His-tag) human recombinant protein, 0.5 mg |
| Species: | Human |
| Expression Host: | E. coli |
| Expression cDNA Clone or AA Sequence: | <u>MGSSHHHHHH SSGLVPRGSH</u> MGNIFANLFK GLFGKKEMRI LMVGLDAAGK TTILYKLLKG EIVTTIPTIG FNVETVEYKN ISFTVWDVGG QDKIRPLWRH YFQNTQGLIF VVDSNDRERV NEAREELMRM LAEDELRLDAV LLVFANKQDL PNAMNAAEIT DKLGLHSLRH RNWYIQATCA TSGDGLYEGD DWLSNQLRNQ K |
| Tag: | His-tag |
| Predicted MW: | 22.8 kDa |
| Concentration: | lot specific |
| Purity: | >90% by SDS - PAGE |
| Buffer: | Presentation State: Purified State: Liquid purified protein Buffer System: 20 mM Tris-HCl buffer (pH 8.0) containing 20% glycerol, 0.1 M NaCl, 1 mM DTT |
| Preparation: | Liquid purified protein |
| Protein Description: | Recombinant human ARF1 protein, fused to His-tag at N-terminus, was expressed in E.coli and purified by using conventional chromatography techniques. |
| Storage: | Store undiluted at 2-8°C for up to two weeks or (in aliquots) at -20°C or -70°C for longer. Avoid repeated freezing and thawing. |
| Stability: | Shelf life: one year from despatch. |
| RefSeq: | <u>NP_001019397</u> |
| Locus ID: | 375 |
| UniProt ID: | <u>P84077</u> , <u>A0A024R3Q0</u> |
| Cytogenetics: | 1q42.13 |
| Synonyms: | PVNH8 |



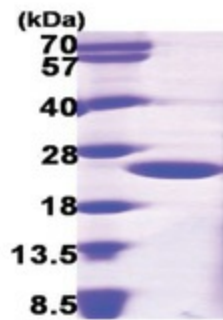
[View online »](#)

Summary:

ADP-ribosylation factor 1 (ARF1) is a member of the human ARF gene family. The family members encode small guanine nucleotide-binding proteins that stimulate the ADP-ribosyltransferase activity of cholera toxin and play a role in vesicular trafficking as activators of phospholipase D. The gene products, including 6 ARF proteins and 11 ARF-like proteins, constitute a family of the RAS superfamily. The ARF proteins are categorized as class I (ARF1, ARF2 and ARF3), class II (ARF4 and ARF5) and class III (ARF6), and members of each class share a common gene organization. The ARF1 protein is localized to the Golgi apparatus and has a central role in intra-Golgi transport. Multiple alternatively spliced transcript variants encoding the same protein have been found for this gene. [provided by RefSeq, Jul 2008]

Protein Pathways:

Vibrio cholerae infection

Product images:

15% SDS-PAGE (3ug)