

Product datasheet for **AR09575PU-N**

RhoC (1-190, His-tag) Human Protein

Product data:

Product Type:	Recombinant Proteins
Description:	RhoC (1-190, His-tag) human recombinant protein, 50 µg
Species:	Human
Expression Host:	E. coli
Expression cDNA Clone or AA Sequence:	<u>MGSSHHHHHH SSGLVPRGSH</u> MAAIRKKLVI VGDGACGKTC LLIVFSKDQF PEVYVPTVFE NYIADIEVDG KQVELALWDT AGQEDYDRLR PLSYPDTDVI LMCFSIDSPD SLENIPEKWT PEVKHFPCNV PIILVGNKKD LRQDEHTRRE LAKMKQEPVR SEEGRDMANR ISAFGYLECS AKTKEGVREV FEMATRAGLQ VRKNKRRRGC
Tag:	His-tag
Predicted MW:	23.8 kDa
Concentration:	lot specific
Purity:	>90% by SDS - PAGE
Buffer:	Presentation State: Purified State: Liquid purified protein Buffer System: 20 mM Tris-HCl buffer (pH 8.0) containing 20% glycerol, 0.1 M NaCl, 1 mM DTT
Preparation:	Liquid purified protein
Protein Description:	Recombinant human RhoC protein, fused to His-tag at N-terminus, was expressed in E.coli and purified by using conventional chromatography techniques.
Storage:	Store undiluted at 2-8°C for up to two weeks or (in aliquots) at -20°C or -70°C for longer. Avoid repeated freezing and thawing.
Stability:	Shelf life: one year from despatch.
RefSeq:	<u>NP_001036143</u>
Locus ID:	389
UniProt ID:	<u>P08134</u> , <u>A0A024R0C8</u>
Cytogenetics:	1p13.2
Synonyms:	ARH9; ARHC; H9; RHOH9



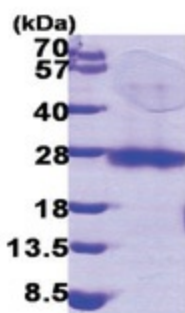
[View online »](#)

Summary:

This gene encodes a member of the Rho family of small GTPases, which cycle between inactive GDP-bound and active GTP-bound states and function as molecular switches in signal transduction cascades. Rho proteins promote reorganization of the actin cytoskeleton and regulate cell shape, attachment, and motility. The protein encoded by this gene is prenylated at its C-terminus, and localizes to the cytoplasm and plasma membrane. It is thought to be important in cell locomotion. Overexpression of this gene is associated with tumor cell proliferation and metastasis. Multiple alternatively spliced variants, encoding the same protein, have been identified. [provided by RefSeq, Jul 2008]

Protein Families:

Druggable Genome

Product images:

15% SDS-PAGE (3ug)