

## Product datasheet for **AR09567PU-N**

### COMMD1 (1-190, His-tag) Human Protein

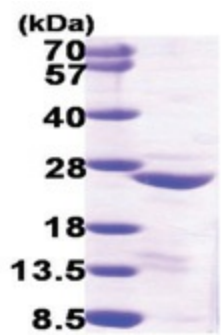
#### Product data:

Product Type:	Recombinant Proteins
Description:	COMMD1 (1-190, His-tag) human recombinant protein, 50 µg
Species:	Human
Expression Host:	E. coli
Expression cDNA Clone or AA Sequence:	<u>MGSSHHHHHH SSSLVPRGSH</u> MAAGELEGGK PLSGLLNALA QDTFHGYPGI TEELLRSQLY PEVPPEEFRP FLAKMRGILK SIASADMDFN QLEAFLTAQT KKQGGITSDQ AAVISKFWKS HKTKIRESLM NQSRWNSGLR GLSWRVVDGKS QSRHSAQIHT PVAIIIELELG KYGQESEFLC LEFDEVKVNQ ILKTLSEVEE SISTLISQPN
Tag:	His-tag
Predicted MW:	23.3 kDa
Concentration:	lot specific
Purity:	>90% by SDS - PAGE
Buffer:	Presentation State: Purified State: Liquid purified protein Buffer System: 20 mM Tris-HCl buffer (pH 8.0) containing 20% glycerol, 0.1 M NaCl
Preparation:	Liquid purified protein
Protein Description:	Recombinant human COMMD1 protein, fused to His-tag at N-terminus, was expressed in E.coli and purified by using conventional chromatography techniques.
Storage:	Store undiluted at 2-8°C for up to two weeks or (in aliquots) at -20°C or -70°C for longer. Avoid repeated freezing and thawing.
Stability:	Shelf life: one year from despatch.
RefSeq:	<u>NP_001308710</u>
Locus ID:	150684
Cytogenetics:	2p15
Synonyms:	C2orf5; MURR1
Summary:	COMMD1 is a regulator of copper homeostasis, sodium uptake, and NF-kappa-B (see MIM 164011) signaling (de Bie et al., 2005 [PubMed 16267171]).[supplied by OMIM, Sep 2009]



[View online »](#)

**Product images:**



15% SDS-PAGE (3ug)