

## Product datasheet for **AR09546PU-L**

### **KRAS (1-185, His-tag) Human Protein**

#### **Product data:**

<b>Product Type:</b>	Recombinant Proteins
<b>Description:</b>	KRAS (1-185, His-tag) human recombinant protein, 0.5 mg
<b>Species:</b>	Human
<b>Expression Host:</b>	E. coli
<b>Expression cDNA Clone or AA Sequence:</b>	<u>MGSSHHHHHH SSGLVPRGSH</u> MTEYKLVWVG AGGVGKSALT IQLIQNHFVD EYDPTIEDSY RKQVVIDGET CLLDILDTAG HEEYSAMRDQ YMRTGEGFLC VFAINNTKSF EDIHHYREQI KRVKDESDVP MVLVGNKCDL PSRTVDTKQA QDLARSYGIP FIETSAKTRQ GVDDAFYTLV REIRKHKEKM SKDGKKKKKK SKTKC
<b>Tag:</b>	His-tag
<b>Predicted MW:</b>	23.2 kDa
<b>Concentration:</b>	lot specific
<b>Purity:</b>	>90% by SDS - PAGE
<b>Buffer:</b>	Presentation State: Purified State: Liquid purified protein Buffer System: 20 mM Tris-HCl buffer (pH 8.0) containing 0.1M NaCl, 1 mM DTT, 10% glycerol
<b>Preparation:</b>	Liquid purified protein
<b>Protein Description:</b>	Recombinant human KRAS protein, fused to His-tag at N-terminus, was expressed in E.coli and purified by using conventional chromatography techniques.
<b>Storage:</b>	Store undiluted at 2-8°C for up to two weeks or (in aliquots) at -20°C or -70°C for longer. Avoid repeated freezing and thawing.
<b>Stability:</b>	Shelf life: one year from despatch.
<b>RefSeq:</b>	<u>NP_004976</u>
<b>Locus ID:</b>	3845
<b>UniProt ID:</b>	<u>P01116</u>
<b>Cytogenetics:</b>	12p12.1
<b>Synonyms:</b>	GTPase KRas, KRAS2, RASK2, K-Ras 2, Ki-Ras, c-K-ras, c-Ki-ras



[View online »](#)

**Summary:**

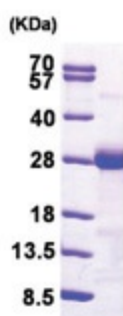
This gene, a Kirsten ras oncogene homolog from the mammalian ras gene family, encodes a protein that is a member of the small GTPase superfamily. A single amino acid substitution is responsible for an activating mutation. The transforming protein that results is implicated in various malignancies, including lung adenocarcinoma, mucinous adenoma, ductal carcinoma of the pancreas and colorectal carcinoma. Alternative splicing leads to variants encoding two isoforms that differ in the C-terminal region. [provided by RefSeq, Jul 2008]

**Protein Families:**

Druggable Genome

**Protein Pathways:**

Acute myeloid leukemia, Axon guidance, B cell receptor signaling pathway, Bladder cancer, Chemokine signaling pathway, Chronic myeloid leukemia, Colorectal cancer, Dorso-ventral axis formation, Endometrial cancer, ErbB signaling pathway, Fc epsilon RI signaling pathway, Gap junction, Glioma, GnRH signaling pathway, Insulin signaling pathway, Long-term depression, Long-term potentiation, MAPK signaling pathway, Melanogenesis, Melanoma, Natural killer cell mediated cytotoxicity, Neurotrophin signaling pathway, Non-small cell lung cancer, Pancreatic cancer, Pathways in cancer, Progesterone-mediated oocyte maturation, Prostate cancer, Regulation of actin cytoskeleton, Renal cell carcinoma, T cell receptor signaling pathway, Thyroid cancer, Tight junction, VEGF signaling pathway

**Product images:**

15% SDS-PAGE (3ug)