

Product datasheet for **AR09537PU-N**

GOT1 (1-413, His-tag) Human Protein

Product data:

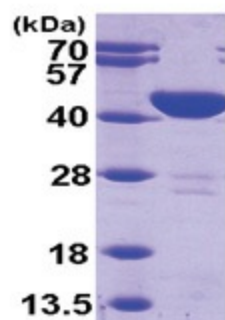
Product Type:	Recombinant Proteins
Description:	GOT1 (1-413, His-tag) human recombinant protein, 0.1 mg
Species:	Human
Expression Host:	E. coli
Tag:	His-tag
Predicted MW:	48.4 kDa
Concentration:	lot specific
Purity:	>95% by SDS - PAGE
Buffer:	Presentation State: Purified State: Liquid purified protein Buffer System: 20mM Tris-HCl buffer (pH 8.0) containing 20% glycerol, 2mM DTT, 100mM NaCl
Preparation:	Liquid purified protein
Protein Description:	Recombinant human GOT1, fused to His-tag at N-terminus, was expressed in E.coli and purified by using conventional chromatography.
Storage:	Store undiluted at 2-8°C for up to two weeks or (in aliquots) at -20°C or -70°C for longer. Avoid repeated freezing and thawing.
Stability:	Shelf life: one year from despatch.
RefSeq:	NP_002070
Locus ID:	2805
Cytogenetics:	10q24.2
Synonyms:	AST1; ASTQTL1; cAspAT; cCAT; GIG18
Summary:	Glutamic-oxaloacetic transaminase is a pyridoxal phosphate-dependent enzyme which exists in cytoplasmic and mitochondrial forms, GOT1 and GOT2, respectively. GOT plays a role in amino acid metabolism and the urea and tricarboxylic acid cycles. The two enzymes are homodimeric and show close homology. [provided by RefSeq, Jul 2008]



[View online »](#)

Protein Pathways: Alanine, aspartate and glutamate metabolism, Arginine and proline metabolism, Cysteine and methionine metabolism, Metabolic pathways, Phenylalanine, tyrosine and tryptophan biosynthesis, Phenylalanine metabolism, Tyrosine metabolism

Product images:



15% SDS-PAGE (3ug)