

## Product datasheet for **AR09536PU-N**

### Antileukoproteinase / ALP (26-132, His-tag) Human Protein

#### Product data:

|                                       |  |
|---------------------------------------|--|
| Product Type:                         | Recombinant Proteins   |
| Description:                          | Antileukoproteinase / ALP (26-132, His-tag) human recombinant protein, 50 µg   |
| Species:                              | Human  |
| Expression Host:                      | E. coli  |
| Expression cDNA Clone or AA Sequence: | <u>MGSSHHHHHH SSGLVPRGSH</u> MSGKSFKAGV CPPKKSQAQCL RYKKPECQSD WQCPGKKRCC PDTCGIKCLD PVDTPNPTRR KPGKCPVTYG QCLMLNPPNF CEMDGQCKRD LKCCMGMCCK SCVSPVKA           |
| Tag:                                  | His-tag  |
| Concentration:                        | lot specific   |
| Purity:                               | >80% by SDS - PAGE   |
| Buffer:                               | Presentation State: Purified<br>State: Liquid purified protein<br>Buffer System: 20 mM Tris-HCl buffer (pH 8.0) containing 20% glycerol, 2 mM DTT, 100 mM NaCl |
| Preparation:                          | Liquid purified protein  |
| Protein Description:                  | Recombinant human SLPI, fused to His-tag at N-terminus, was expressed in E.coli and purified by using conventional chromatography.                             |
| Storage:                              | Store undiluted at 2-8°C for up to two weeks or (in aliquots) at -20°C or -70°C for longer. Avoid repeated freezing and thawing.                               |
| Stability:                            | Shelf life: one year from despatch.  |
| RefSeq:                               | <u>NP_003055</u>   |
| Locus ID:                             | 6590   |
| UniProt ID:                           | <u>P03973</u>  |
| Cytogenetics:                         | 20q13.12   |
| Synonyms:                             | ALK1; ALP; BLPI; HUSI; HUSI-I; MPI; WAP4; WFDC4  |



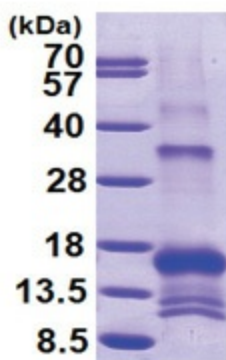
[View online »](#)

**Summary:**

This gene encodes a secreted inhibitor which protects epithelial tissues from serine proteases. It is found in various secretions including seminal plasma, cervical mucus, and bronchial secretions, and has affinity for trypsin, leukocyte elastase, and cathepsin G. Its inhibitory effect contributes to the immune response by protecting epithelial surfaces from attack by endogenous proteolytic enzymes. This antimicrobial protein has antibacterial, antifungal and antiviral activity. [provided by RefSeq, Nov 2014]

**Protein Families:**

Secreted Protein

**Product images:**

15% SDS-PAGE (3ug)