

Product datasheet for **AR09529PU-L**

Cytoglobin (1-190, His-tag) Human Protein

Product data:

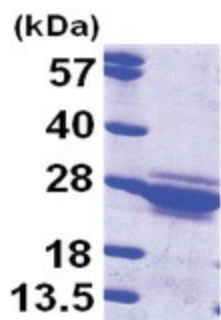
Product Type:	Recombinant Proteins
Description:	Cytoglobin (1-190, His-tag) human recombinant protein, 0.25 mg
Species:	Human
Expression Host:	E. coli
Expression cDNA Clone or AA Sequence:	<u>MGSSHHHHHH SSGLVPRGSH</u> MEKVPGEMEI ERRERSEELS EAERKAVQAM WARLYASCD VGVAILVRFF VNFPSAKQYF SQFKHMEDPL EMERSPQLRK HACRVMGALN TVVENLHDPD KVSSVLALVG KAHALKHKVE PVYFKILSGV ILEVAAEEFA SDFPPETQRA WAKLRGLIYS HVTAAYKEVG WWQQVPNATT PPATLPSSGP
Tag:	His-tag
Predicted MW:	23.5 kDa
Concentration:	lot specific
Purity:	>90% by SDS - PAGE
Buffer:	Presentation State: Purified State: Liquid purified protein Buffer System: 20 mM Tris-HCl Buffer (pH 8.0) containing 10% Glycerol
Preparation:	Liquid purified protein
Protein Description:	Recombinant human CYGB, fused to His-tag at N-terminus, was expressed in E.coli and purified by using conventional chromatography.
Storage:	Store undiluted at 2-8°C for up to two weeks or (in aliquots) at -20°C or -70°C for longer. Avoid repeated freezing and thawing.
Stability:	Shelf life: one year from despatch.
RefSeq:	<u>NP_599030</u>
Locus ID:	114757
UniProt ID:	<u>Q8WWM9</u> , <u>A0A1K0FUB6</u>
Cytogenetics:	17q25.1
Synonyms:	HGB; STAP



[View online »](#)

Summary:

This gene encodes a globin protein found in vertebrate cells. The encoded protein is described as a hexacoordinate hemoglobin which binds ligand differently from the pentacoordinate hemoglobins involved in oxygen transport, and may be involved in protection during oxidative stress. This gene is located on chromosome 17 in the same region as a retinal gene which is mutated in progressive rod-cone degeneration, but in the opposite orientation. [provided by RefSeq, Jan 2012]

Product images:

15% SDS-PAGE (3ug)