

## Product datasheet for **AR09362PU-N**

### Cytokeratin 18 Human Protein

#### Product data:

Product Type:	Recombinant Proteins
Description:	Cytokeratin 18 human recombinant protein, 0.25 mg
Species:	Human
Expression Host:	E. coli
Predicted MW:	48,201
Concentration:	lot specific
Purity:	>95% pure (determined by SDS gelelectrophoresis)
Buffer:	Presentation State: Purified State: Lyophilized purified protein Buffer System: 30 mM Tris/HCl pH 8, 9.5M Urea, 2 mM DTT, 2 mM EDTA, 10 mM Methylammonium Chloride. Restore with 175 µl distilled water (final volume 250µl)
Preparation:	Lyophilized purified protein
Applications:	<b>Protein standard in 1D and 2D SDS gelelectrophoresis.</b> <b>Immunoassays.</b> <b>Immunization.</b> Protocol: <b>Reconstitution to filaments</b> is performed by mixing equimolar amounts of keratins of type I and type II at concentrations of approx. 0.5 mg/ml, both dissolved in 9.5 M urea buffer (see above). Protofilaments and filament complexes are obtained by dialyzing the resulting polypeptide solution stepwise to a concentration of 4 M urea and then to low salt condition (50 mM NaCl, 2 mM dithiothreitol, 10 mM Tris-HCl, pH 7.4). For immunization purposes, the solution can be further dialyzed against PBS (phosphate buffered saline, e.g. Dulbecco's PBS).
Protein Description:	Recombinant Human keratin K18 Standard (formerly also designated Cytokeratin 18).
Note:	<b>Isoelectric Point:</b> pI 5.7
Storage:	Store lyophilized at 2-8°C for 6 months or at -20°C long term. After reconstitution store the antibody undiluted at 2-8°C for one month or (in aliquots) at -20°C long term. Avoid repeated freezing and thawing.



[View online »](#)

**Stability:** Shelf life: one year from despatch.

**RefSeq:** [NP\\_000215](#)

**Locus ID:** 3875

**UniProt ID:** [P05783](#)

**Cytogenetics:** 12q13.13

**Synonyms:** Cytokeratin-18, CK18, Keratin-18, Keratin 18, KRT18, CYK18, K18

**Summary:** KRT18 encodes the type I intermediate filament chain keratin 18. Keratin 18, together with its filament partner keratin 8, are perhaps the most commonly found members of the intermediate filament gene family. They are expressed in single layer epithelial tissues of the body. Mutations in this gene have been linked to cryptogenic cirrhosis. Two transcript variants encoding the same protein have been found for this gene. [provided by RefSeq, Jul 2008]

**Protein Families:** **Protein standard in 1D and 2D SDS gelelectrophoresis.**

**Immunoassays.**

**Immunization.**

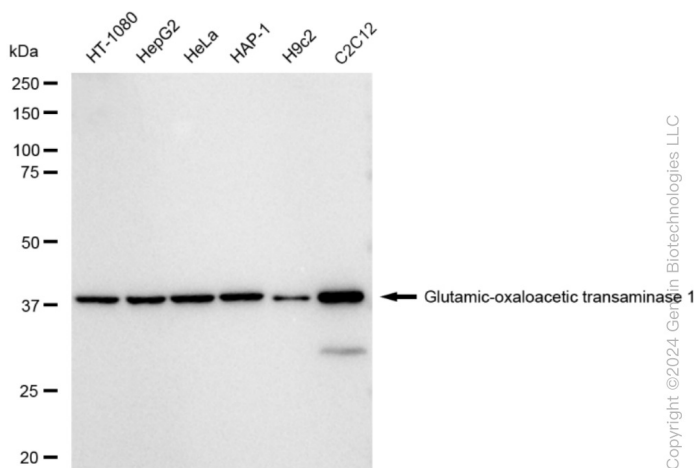
Protocol: **Reconstitution to filaments** is performed by mixing equimolar amounts of keratins of type I and type II at concentrations of approx. 0.5 mg/ml, both dissolved in 9.5 M urea buffer (see above).

Protofilaments and filament complexes are obtained by dialyzing the resulting polypeptide solution stepwise to a concentration of 4 M urea and then to low salt condition (50 mM NaCl, 2 mM dithiothreitol, 10 mM Tris-HCl, pH 7.4).

For immunization purposes, the solution can be further dialyzed against PBS (phosphate buffered saline, e.g. Dulbecco's PBS).

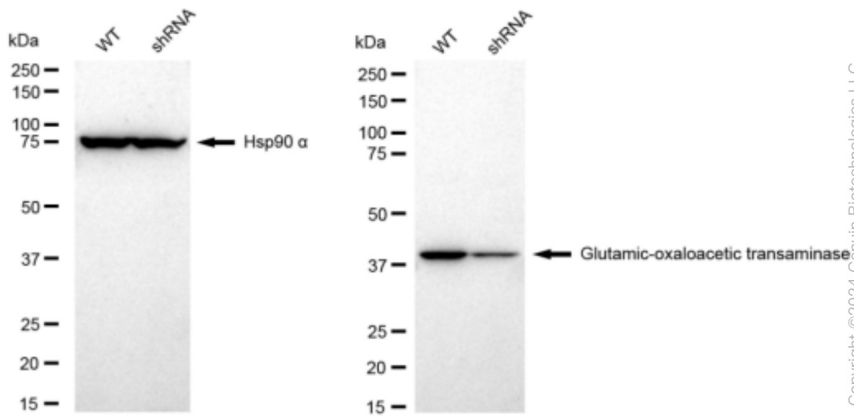
**Protein Pathways:** Pathogenic Escherichia coli infection

**Product images:**



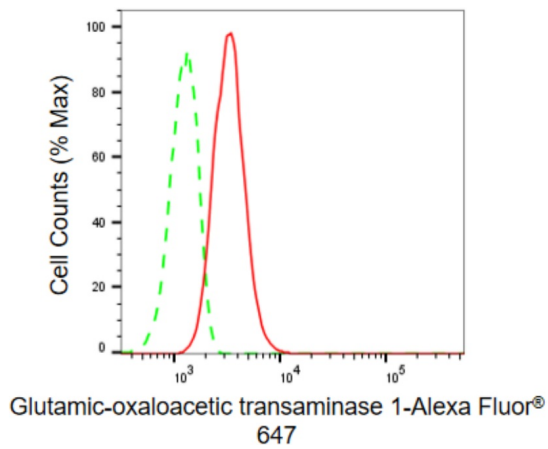
Western blotting analysis using anti-Glutamic-oxaloacetic transaminase 1 antibody . Total cell lysates (30 µg) from various cell lines were loaded and separated by SDS-PAGE. The blot was incubated with anti-Glutamic-oxaloacetic transaminase 1 antibody and HRP-conjugated goat anti-rabbit secondary antibody respectively. Image was developed using anti-FeQ™ ECL Substrate Kit .

Copyright ©2024 Gene In Biotechnologies LLC



Copyright ©2024 Genuin Biotechnologies LLC

Western blotting analysis using anti-Glutamic-oxaloacetic transaminase 1 antibody . Glutamic-oxaloacetic transaminase 1 expression in wild type (WT) and Glutamic-oxaloacetic transaminase 1 shRNA knockdown (KD) HeLa cells with 30  $\mu$ g of total cell lysates . Hsp90  $\alpha$  serves as a loading control. The blot was incubated with anti-Glutamic-oxaloacetic transaminase 1 antibody and HRP-conjugated goat anti-rabbit secondary antibody respectively. Image was developed using anti-FeQ™ ECL Substrate Kit .



Copyright ©2024 Genuin Biotechnologies LLC

Flow cytometric analysis of Glutamic-oxaloacetic transaminase 1 expression in C2C12 cells using anti-Glutamic-oxaloacetic transaminase 1 antibody . Green, isotype control; red, Glutamic-oxaloacetic transaminase 1.