

Product datasheet for **AR09009PU-L**

CIB1 (1-191, His-tag) Human Protein

Product data:

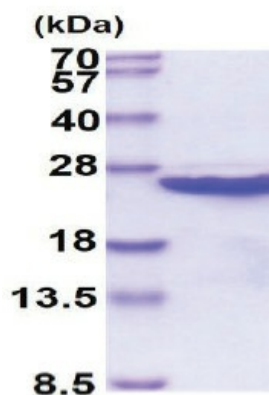
Product Type:	Recombinant Proteins
Description:	CIB1 (1-191, His-tag) human recombinant protein, 0.5 mg
Species:	Human
Expression Host:	E. coli
Expression cDNA Clone or AA Sequence:	<u>MGSSHHHHHH</u> <u>SSGLVPRGSH</u> MGGSGSRLSK ELLAEYQDLT FLTKQEILLA HRRFCCELLPQ EQRTVESSLR AQVPFEQILS LPELKANPFK ERICRVFSTS PAKDLSLFED FLDLLSVFSD TATPDIKSHY AFRIFDFDDD GTLNREDLSR LVNCLTGEGE DTRLSASEMK QLIDNILEES DIDRDGTINL SEFQHVISR PDFASSFKIV L
Tag:	His-tag
Predicted MW:	23 kDa
Concentration:	lot specific
Purity:	>95% pure by SDS PAGE
Buffer:	Presentation State: Purified State: Liquid purified protein Buffer System: 20 mM Tris pH 8.0, 5 mM DTT
Preparation:	Liquid purified protein
Protein Description:	Recombinant Human CIB1, fused to His-tag at N-terminus, was expressed in E.coli and purified by using conventional chromatography techniques.
Note:	NCBI Accession : NP_006375
Storage:	Store undiluted at 2-8°C for one month or (in aliquots) at -20°C for longer. Avoid repeated freezing and thawing.
Stability:	Shelf life: one year from despatch.
RefSeq:	<u>NP_001264693</u>
Locus ID:	10519
UniProt ID:	<u>Q99828</u>
Cytogenetics:	15q26.1
Synonyms:	CIB; CIBP; KIP1; PRKDCIP; SIP2-28



[View online »](#)

Summary:

This gene encodes a member of the EF-hand domain-containing calcium-binding superfamily. The encoded protein interacts with many other proteins, including the platelet integrin alpha-IIb-beta-3, DNA-dependent protein kinase, presenilin-2, focal adhesion kinase, p21 activated kinase, and protein kinase D. The encoded protein may be involved in cell survival and proliferation, and is associated with several disease states including cancer and Alzheimer's disease. Alternative splicing results in multiple transcript variants. [provided by RefSeq, Apr 2013]

Product images:

15% SDS-PAGE (3ug)