

Product datasheet for **AR03009PU-N**

Maltose Binding Protein Tag / MBP-Tag (27-392) Escherichia coli Protein

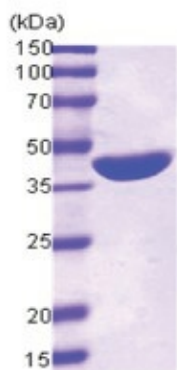
Product data:

Product Type:	Recombinant Proteins
Description:	Maltose Binding Protein Tag / MBP-Tag (27-392) e. coli recombinant protein, 0.5 mg
Species:	Escherichia coli
Expression Host:	E. coli
Expression cDNA Clone or AA Sequence:	<u>M</u> KIEEGKLV I WINGDKGYNG LAEVGKKFEK DTGIKVTVEH PDKLEEKFPQ VAATGDGPDI IFWAHDRFGG YAQSGLLAEI TPKAFQDKL YPFTWDAVRY NGKLIAYPIA VEALSLIYNK DLLPNPPKTW EEIPALDKEL KAKGKSALMF NLQEPYFTWP LIAADGGYAF KYENKDYDIK DVGVDNAGAK AGLTFLVDLI KNKHMNADTD YSIAEAAFNK GETAMTINGP WAWSNIDTSK VNYGVTVLPT FKGQPSKPFV GVLSAGINAA SPNKELAKEF LENYLLTDEG LEAVNKDKPL GAVALKSYEE ELAKDPRIAA TMENAQKGEI MPNIPQMSAF WYAVRTAVIN AASGRQTVDE ALKDAQTNSS SNNNNNNNNN <u>N</u> LGIEGR
Predicted MW:	42 kDa
Concentration:	lot specific
Purity:	>95% by SDS PAGE
Buffer:	Presentation State: Purified State: Liquid purified peptide Buffer System: 20 mM Tris-HCl buffer (pH 8.0)
Preparation:	Liquid purified peptide
Protein Description:	Recombinant MBP was expressed in E.coli and purified by conventional chromatography techniques.
Storage:	Store undiluted at 2-8°C for up to two weeks or (in aliquots) at -20°C or -70°C for longer. Avoid repeated freezing and thawing.
Stability:	Shelf life: one year from despatch.
Summary:	MBP (Maltose Binding Protein) is a protein related with the maltose/maltodextrin system of Escherichia coli, which is responsible for the uptake and efficient catabolism of maltodextrins. It is a complex regulatory and transport system involving many proteins and protein complexes. MBP has been used to increase the yield of its fusion partner in many cases. In addition, MBP is often able to promote the solubility of polypeptides to which it is fused.



[View online »](#)

Product images:



15% SDS-PAGE(3 μ g)