

Product datasheet for **AP60011PU-L**

Endomucin (EMCN) Rabbit Polyclonal Antibody

Product data:

Product Type:	Primary Antibodies
Applications:	IF, IHC, WB
Recommended Dilution:	Western blot: 1-5 µg/ml. Immunofluorescence/Immunohistochemistry: 1-5 µg/ml (Cryo).
Reactivity:	Human
Host:	Rabbit
Isotype:	IgG
Clonality:	Polyclonal
Immunogen:	Highly pure (>95%) recombinant Human soluble Endomucin (Asn18 - Ser190) derived from <i>E. coli</i> (Cat.-No AR31181PU-N).
Specificity:	This antibody detects Human Endomucin (Asn18 - Ser190). Other species not tested.
Formulation:	PBS State: Purified State: Lyophilized purified Ig fraction
Reconstitution Method:	Restore in sterile water to a concentration of 0.1-1.0 mg/ml. Centrifuge vial prior to opening.
Purification:	Protein A Chromatography
Conjugation:	Unconjugated
Storage:	Store lyophilized at 2-8°C for 6 month or at -20°C long term. After reconstitution store the antibody undiluted at 2-8°C for one month or (in aliquots) at -20°C long term. Avoid repeated freezing and thawing.
Stability:	Shelf life: one year from despatch.
Gene Name:	endomucin
Database Link:	Entrez Gene 51705 Human Q9ULC0



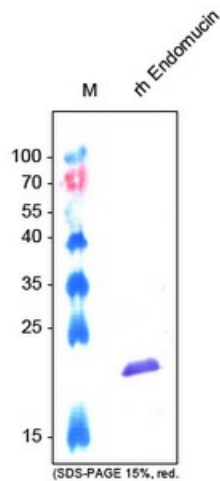
[View online »](#)

Background:

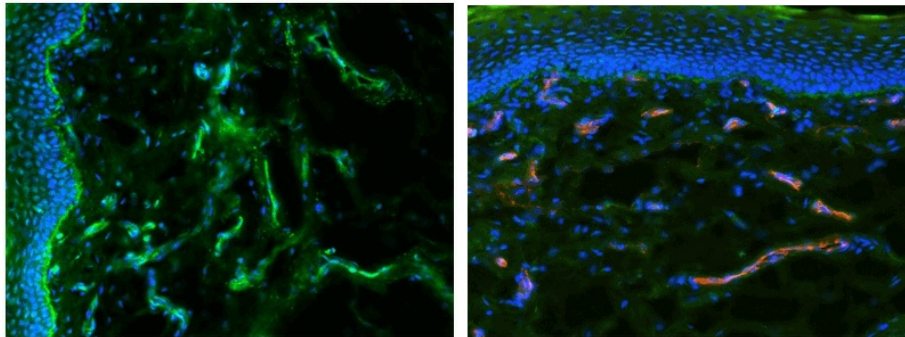
Endomucin (endothelial sialomucin; also Endomucin-1/2 and Mucin-14) is an 80 - 120 kDa glycoprotein member of the Endomucin family of proteins. It is expressed on endothelial cells and depending upon its glycosylation pattern, can serve as either a pro- or anti-adhesive molecule. Mouse Endomucin precursor is 261 amino acids in length. It is type I transmembrane protein that contains a 170 aa extracellular domain (ECD) (aa 21 - 190) and a 50 aa cytoplasmic region. Three splice variants exist in the ECD. One shows a deletion of aa 91 - 141, a second shows a one aa substitution for aa 91 - 129, and a third shows a one aa substitution for aa 129 - 142. Over aa 21 - 90, mouse Endomucin shares 60% and 30% aa identity with rat and human Endomucin, respectively.

Synonyms:

EMCN, EMCN2, MUC14, Endomucin-2, Mucin-14, Gastric cancer antigen Ga34

Product images:


Western blot analysis using anti-Human Endomucin antibody. Sample was loaded in 15% SDS-polyacrylamide gel under reducing conditions. Lane 1: MWM (kDa); Lane 2: rh sEndomucin.



Immunofluorescence staining (green) of cryosections of Human foreskin (fixed 15 min in 4% PFA) with anti-Human Endomucin antibody (5 ug/ml) and counter staining of nuclei with DAPI (blue) and double staining with anti-CD31 (right panel). Performed by the research group of Prof. Dr. J. Wilting and Dr. K. Buttler, University Göttingen, Germany.