

## Product datasheet for **AP60010PU-S**

### Emcn Rabbit Polyclonal Antibody

#### Product data:

Product Type:	Primary Antibodies
Applications:	FC, IF, IHC, WB
Recommended Dilution:	<b>Western blot:</b> 1-5 µg/ml. <b>FACS:</b> 1-5 µg/ml. <b>Immunofluorescence/Immunohistochemistry on Frozen Sections:</b> 5 µg/ml.
Reactivity:	Mouse
Host:	Rabbit
Isotype:	IgG
Clonality:	Polyclonal
Immunogen:	Highly pure (>95%) recombinant mouse soluble Endomucin (Glu20-Ser190) derived from <i>E. coli</i> (Cat.-No. AR60010PU-N)
Specificity:	This antibody detects Mouse Endomucin (Glu20-Ser190). Other species not tested.
Formulation:	PBS State: Aff - Purified State: Lyophilized purified Ig fraction
Reconstitution Method:	Centrifuge vial prior to opening. Restore in sterile water to a concentration of 0.1-1.0 mg/ml.
Purification:	Antigen Affinity Chromatography
Conjugation:	Unconjugated
Storage:	Store lyophilized at 2-8°C for 6 month or at -20°C long term. After reconstitution store the antibody undiluted at 2-8°C for one month or (in aliquots) at -20°C long term. Avoid repeated freezing and thawing.
Stability:	Shelf life: one year from despatch.
Gene Name:	endomucin
Database Link:	<a href="#">Entrez Gene 59308 Mouse Q9R0H2</a>



[View online »](#)

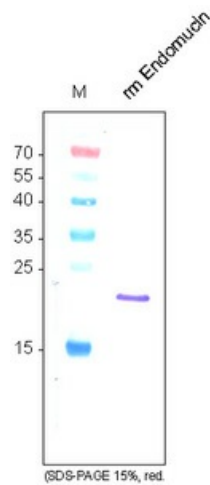
**Background:**

Endomucin (endothelial sialomucin; also Endomucin-1/2 and Mucin-14) is an 80 - 120 kDa glycoprotein member of the Endomucin family of proteins. It is expressed on endothelial cells and depending upon its glycosylation pattern, can serve as either a pro- or anti-adhesive molecule. Mouse Endomucin precursor is 261 amino acids in length. It is type I transmembrane protein that contains a 170 aa extracellular domain (ECD) (aa 21 - 190) and a 50 aa cytoplasmic region. Three splice variants exist in the ECD. One shows a deletion of aa 91 - 141, a second shows a one aa substitution for aa 91 - 129, and a third shows a one aa substitution for aa 129 - 142. Over aa 21 - 90, mouse Endomucin shares 60% and 30% aa identity with rat and human Endomucin, respectively.

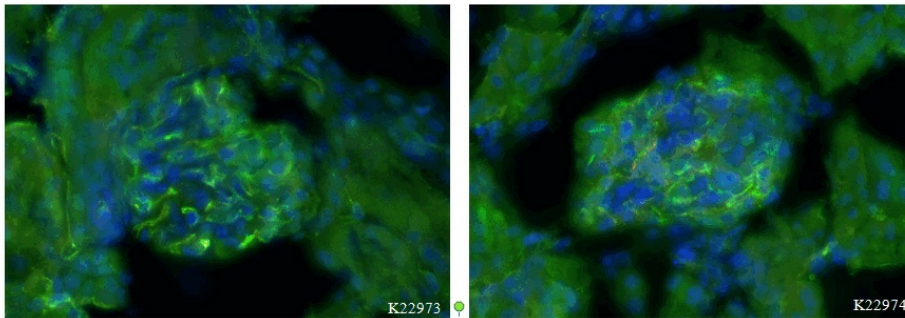
**Synonyms:**

EMCN, EMCN2, MUC14, Endomucin-2, Mucin-14, Gastric cancer antigen Ga34

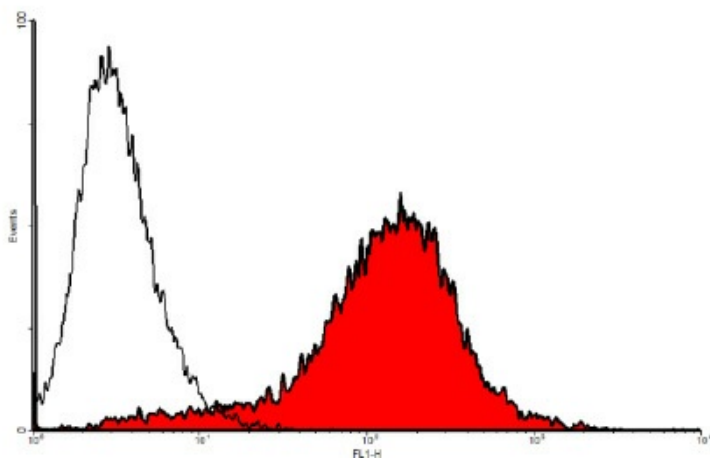
**Product images:**



Western analysis using anti-mouse Endomucin antibody. Sample was loaded in 15% SDS-polyacrylamide gel under reducing conditions. Lane 1: MWM (kDa). Lane 2: rm sEndomucin (250ng).



Immunofluorescence staining (green) of cryo-sections of adult mouse kidney (fixed 15 min in 4% PFA) with anti-mouse Endomucin antibody. (5ug/ml) and counter staining of nuclei with DAPI (blue). *Performed by the research group of Prof. Dr. J. Wilting and Dr. K. Buttler, University Göttingen, Germany.*



FACS analysis with primary mouse endothelial cells (SnoMec).