

Product datasheet for **AP60010PU-N**

Emcn Rabbit Polyclonal Antibody

Product data:

| | |
|------------------------|--|
| Product Type: | Primary Antibodies |
| Applications: | FC, WB |
| Recommended Dilution: | Western blot: 1-5 µg/ml. FACS: 1-5 µg/ml. |
| Reactivity: | Mouse |
| Host: | Rabbit |
| Isotype: | IgG |
| Clonality: | Polyclonal |
| Immunogen: | Highly pure (>95%) recombinant Mouse soluble Endomucin (Glu20-Ser190) derived from <i>E. coli</i> (Cat.-No. AR60010PU-N) |
| Specificity: | This antibody detects Mouse Endomucin (Glu20-Ser190). Other species not tested. |
| Formulation: | PBS State: Purified State: Lyophilized purified Ig fraction |
| Reconstitution Method: | Restore in sterile water to a concentration of 0.1-1.0 mg/ml. Centrifuge vial prior to opening. |
| Purification: | Protein A Chromatography |
| Conjugation: | Unconjugated |
| Storage: | Store lyophilized at 2-8°C for 6 month or at -20°C long term. After reconstitution store the antibody undiluted at 2-8°C for one month or (in aliquots) at -20°C long term. Avoid repeated freezing and thawing. |
| Stability: | Shelf life: one year from despatch. |
| Gene Name: | endomucin |
| Database Link: | Entrez Gene 59308 Mouse Q9R0H2 |



[View online »](#)

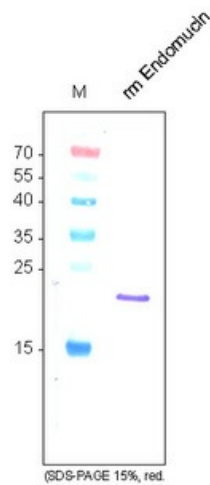
Background:

Endomucin (endothelial sialomucin; also Endomucin-1/2 and Mucin-14) is an 80 - 120 kDa glycoprotein member of the Endomucin family of proteins. It is expressed on endothelial cells and depending upon its glycosylation pattern, can serve as either a pro- or anti-adhesive molecule. Mouse Endomucin precursor is 261 amino acids in length. It is type I transmembrane protein that contains a 170 aa extracellular domain (ECD) (aa 21 - 190) and a 50 aa cytoplasmic region. Three splice variants exist in the ECD. One shows a deletion of aa 91 - 141, a second shows a one aa substitution for aa 91 - 129, and a third shows a one aa substitution for aa 129 - 142. Over aa 21 - 90, mouse Endomucin shares 60% and 30% aa identity with rat and human Endomucin, respectively.

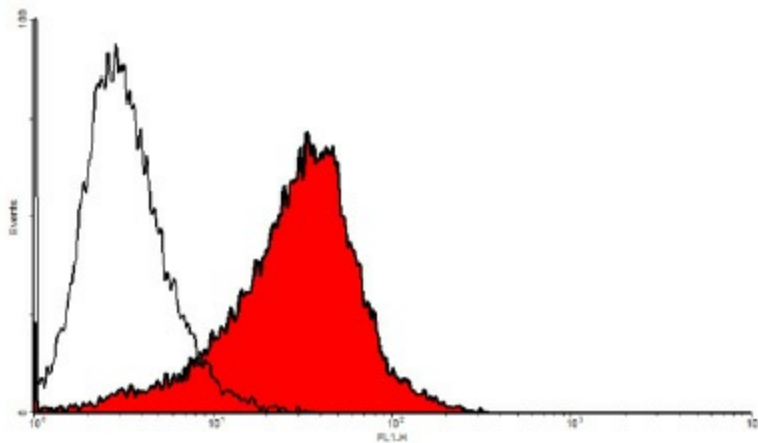
Synonyms:

EMCN, EMCN2, MUC14, Endomucin-2, Mucin-14, Gastric cancer antigen Ga34

Product images:



Western analysis using anti-mouse Endomucin antibody. Sample was loaded in 15% SDS-polyacrylamide gel under reducing conditions. Lane 1: MWM (kDa); Lane 2: rm sEndomucin (250ng).



FACS analysis with primary mouse endothelial cells (SnoMec).