

Product datasheet for **AP60010PU-L**

Emcn Rabbit Polyclonal Antibody

Product data:

Product Type:	Primary Antibodies
Applications:	FC, WB
Recommended Dilution:	Western blot: 1-5 µg/ml. FACS: 1-5 µg/ml.
Reactivity:	Mouse
Host:	Rabbit
Isotype:	IgG
Clonality:	Polyclonal
Immunogen:	Highly pure (>95%) recombinant Mouse soluble Endomucin (Glu20-Ser190) derived from <i>E. coli</i> (Cat.-No. AR60010PU-N)
Specificity:	This antibody detects Mouse Endomucin (Glu20-Ser190). Other species not tested.
Formulation:	PBS State: Purified State: Lyophilized purified Ig fraction
Reconstitution Method:	Restore in sterile water to a concentration of 0.1-1.0 mg/ml. Centrifuge vial prior to opening.
Purification:	Protein A Chromatography
Conjugation:	Unconjugated
Storage:	Store lyophilized at 2-8°C for 6 month or at -20°C long term. After reconstitution store the antibody undiluted at 2-8°C for one month or (in aliquots) at -20°C long term. Avoid repeated freezing and thawing.
Stability:	Shelf life: one year from despatch.
Gene Name:	endomucin
Database Link:	Entrez Gene 59308 Mouse Q9R0H2



[View online »](#)

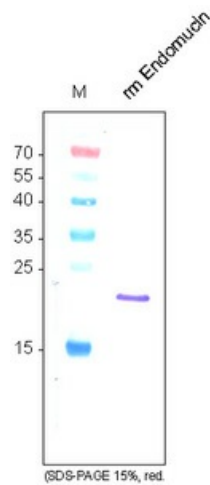
Background:

Endomucin (endothelial sialomucin; also Endomucin-1/2 and Mucin-14) is an 80 - 120 kDa glycoprotein member of the Endomucin family of proteins. It is expressed on endothelial cells and depending upon its glycosylation pattern, can serve as either a pro- or anti-adhesive molecule. Mouse Endomucin precursor is 261 amino acids in length. It is type I transmembrane protein that contains a 170 aa extracellular domain (ECD) (aa 21 - 190) and a 50 aa cytoplasmic region. Three splice variants exist in the ECD. One shows a deletion of aa 91 - 141, a second shows a one aa substitution for aa 91 - 129, and a third shows a one aa substitution for aa 129 - 142. Over aa 21 - 90, mouse Endomucin shares 60% and 30% aa identity with rat and human Endomucin, respectively.

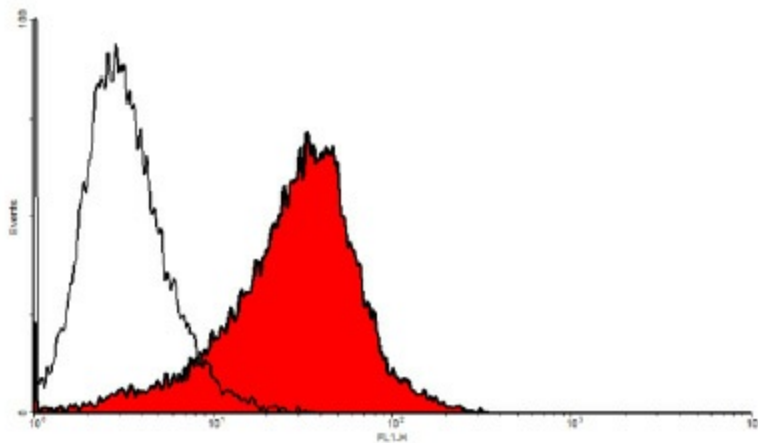
Synonyms:

EMCN, EMCN2, MUC14, Endomucin-2, Mucin-14, Gastric cancer antigen Ga34

Product images:



Western analysis using anti-mouse Endomucin antibody. Sample was loaded in 15% SDS-polyacrylamide gel under reducing conditions. Lane 1: MWM (kDa); Lane 2: rm sEndomucin (250ng).



FACS analysis with primary mouse endothelial cells (SnoMec).