

## Product datasheet for **AP60006PU-N**

### **SRY Rabbit Polyclonal Antibody**

#### **Product data:**

Product Type:	Primary Antibodies
Applications:	WB
Recommended Dilution:	<b>Western blot:</b> 1-5 µg/ml.
Reactivity:	Bovine
Host:	Rabbit
Isotype:	IgG
Clonality:	Polyclonal
Immunogen:	Highly pure recombinant human bovine SRY (Met1 - Tyr229) derived derived from <i>E. coli</i> (Cat.-No. AR60006PU-N)
Specificity:	This antibody detects SRY.
Formulation:	PBS State: Purified State: Lyophilized purified Ig fraction
Reconstitution Method:	Centrifuge vial prior to opening. Restore in sterile water to a concentration of 0.1-1.0 mg/ml.
Purification:	Protein A chromatography
Conjugation:	Unconjugated
Storage:	Prior to reconstitution store at 2-8°C. Following reconstitution store undiluted at 2-8°C for one month or (in aliquots) at -20°C for longer. Avoid repeated freezing and thawing.
Stability:	Shelf life: one year from despatch.
Database Link:	<a href="#">Entrez Gene 280931 Bovine Q03255</a>



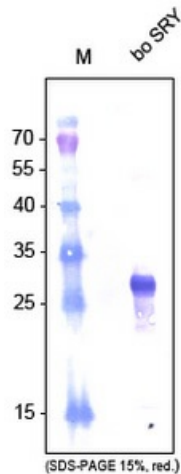
[View online »](#)

**Background:**

The „Sex determining region of Y-Gen“ (SRY), known as SRY gene, is coding for a transkription factor (TDF for Testis-determining factor). It belongs to the protein family of DNA binding-proteins. The SRY gene is beside other genes used for the determination of the sex in human as well as other mammals. Most mammals have for this purpose a further gene, UBE1. In humans SRY is normally located on the short arm of the Y chromosome. Accordingly, people who possess this chromosome with the corresponding gene, normally have a male phenotype. It does not matter how many copies of the X chromosome are present, even people with a multiple X chromosome (Klinefelter's syndrome) have this. The protein encoded by the gene Testis-determining factor controls the development of male sex.

**Synonyms:**

TDF; TDY

**Product images:**

Western blot analysis using SRY antibody. against bovine SRY.