

Product datasheet for **AP60006PU-L**

SRY Rabbit Polyclonal Antibody

Product data:

| | |
|------------------------|--|
| Product Type: | Primary Antibodies |
| Applications: | WB |
| Recommended Dilution: | Western blot: 1-5 µg/ml. |
| Reactivity: | Bovine |
| Host: | Rabbit |
| Isotype: | IgG |
| Clonality: | Polyclonal |
| Immunogen: | Highly pure recombinant human bovine SRY (Met1 - Tyr229) derived derived from <i>E. coli</i> (Cat.-No. AR60006PU-N) |
| Specificity: | This antibody detects SRY. |
| Formulation: | PBS State: Purified State: Lyophilized purified Ig fraction |
| Reconstitution Method: | Centrifuge vial prior to opening. Restore in sterile water to a concentration of 0.1-1.0 mg/ml. |
| Purification: | Protein A chromatography |
| Conjugation: | Unconjugated |
| Storage: | Prior to reconstitution store at 2-8°C. Following reconstitution store undiluted at 2-8°C for one month or (in aliquots) at -20°C for longer. Avoid repeated freezing and thawing. |
| Stability: | Shelf life: one year from despatch. |
| Database Link: | Entrez Gene 280931 Bovine Q03255 |



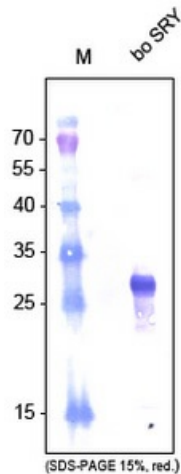
[View online »](#)

Background:

The „Sex determining region of Y-Gen“ (SRY), known as SRY gene, is coding for a transkription factor (TDF for Testis-determining factor). It belongs to the protein family of DNA binding-proteins. The SRY gene is beside other genes used for the determination of the sex in human as well as other mammals. Most mammals have for this purpose a further gene, UBE1. In humans SRY is normally located on the short arm of the Y chromosome. Accordingly, people who possess this chromosome with the corresponding gene, normally have a male phenotype. It does not matter how many copies of the X chromosome are present, even people with a multiple X chromosome (Klinefelter's syndrome) have this. The protein encoded by the gene Testis-determining factor controls the development of male sex.

Synonyms:

TDF; TDY

Product images:

Western blot analysis using SRY antibody. against bovine SRY.