

Product datasheet for **AP60000PU-N**

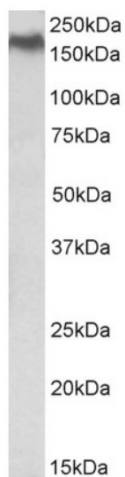
Niemann Pick C1 (NPC1) Goat Polyclonal Antibody

Product data:

Product Type:	Primary Antibodies
Applications:	ELISA, WB
Recommended Dilution:	Peptide ELISA: 1/128000 (Detection Limit). Western blot: 0.5-1.5 µg/ml. Approx 170kDa band observed in lysates of cell line HEK293 (calculated MW of 142kDa according to NP_000262.2).
Reactivity:	Human
Host:	Goat
Clonality:	Polyclonal
Immunogen:	Peptide with sequence C-TYHTVLQTSADFID, from the internal region of the protein sequence according to NP_000262.2.
Specificity:	This antibody recognizes Human NPC1. Other species not tested.
Formulation:	Tris saline, pH~7.3 State: Aff - Purified State: Liquid purified IgG fraction Stabilizer: 0.5% BSA Preservative: 0.02% Sodium Azide
Concentration:	lot specific
Purification:	Ammonium Sulphate precipitation followed by Antigen Affinity Chromatography using the immunizing peptide
Conjugation:	Unconjugated
Storage:	Store undiluted at 2-8°C for one month or (in aliquots) at -20°C for longer. Avoid repeated freezing and thawing.
Stability:	Shelf life: one year from despatch.
Database Link:	Entrez Gene 4864 Human O15118
Synonyms:	FLJ98532; NPC; NPCA1



[View online »](#)

Product images:

(0.5ug/ml) staining of HEK293 lysate (35ug protein in RIPA buffer). Primary incubation was 1 hour. Detected by chemiluminescence.