

Product datasheet for **AP55933PU-S**

VEGF Receptor 1 (FLT1) pTyr1213 Rabbit Polyclonal Antibody

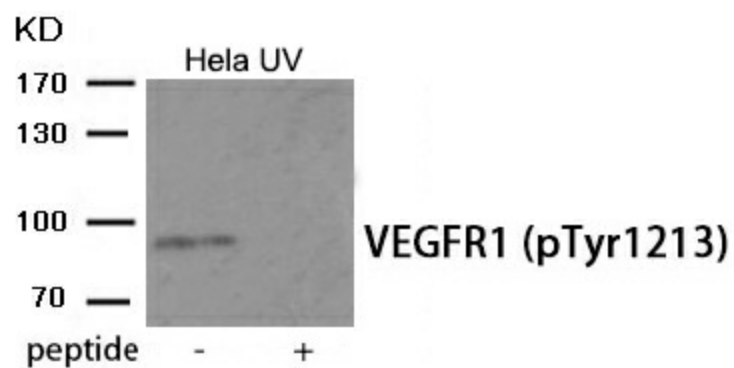
Product data:

Product Type:	Primary Antibodies
Applications:	WB
Recommended Dilution:	Western blot: 1:500~1:1000.
Reactivity:	Human, Mouse, Rat
Host:	Rabbit
Clonality:	Polyclonal
Immunogen:	Peptide sequence around phosphorylation site of Tyrosine 1213(V-R-Y(p)-V-N) derived from Human VEGFR1 (KLH-conjugated)
Specificity:	The antibody detects endogenous level of VEGFR1 only when phosphorylated at tyrosine 1213.
Formulation:	Rabbit IgG in phosphate buffered saline (without Mg ²⁺ and Ca ²⁺), pH 7.4, 150mM NaCl, 0.02% sodium azide and 50% glycerol State: Aff - Purified State: Liquid Ig fraction
Concentration:	lot specific
Purification:	Affinity chromatography using epitope-specific peptide
Conjugation:	Unconjugated
Storage:	Upon receipt, store undiluted (in aliquots) at -20°C. Avoid repeated freezing and thawing.
Stability:	Shelf life: one year from despatch.
Predicted Protein Size:	90 kDa
Gene Name:	fms related tyrosine kinase 1
Database Link:	Entrez Gene 2321 Human P17948
Background:	Receptor for VEGF, VEGFB and PGF. Has a tyrosine-protein kinase activity. The VEGF-kinase ligand/receptor signaling system plays a key role in vascular development and regulation of vascular permeability. Isoform SFlt1 may have an inhibitory role in angiogenesis.
Synonyms:	VEGFR1, FLT1, FLT, FRT, VEGF Receptor 1



[View online »](#)

Product images:



Western blot analysis of extracts from HeLa cells treated with UV using Phospho-VEGFR1 (Tyr1213) Antibody. The lane on the right is treated with the antigen-specific peptide.