

## Product datasheet for **AP55932PU-N**

### HDAC6 pSer22 Rabbit Polyclonal Antibody

#### Product data:

Product Type:	Primary Antibodies
Applications:	WB
Recommended Dilution:	<b>Western blot:</b> 1:500~1:1000.
Reactivity:	Human, Mouse
Host:	Rabbit
Clonality:	Polyclonal
Immunogen:	Peptide sequence around phosphorylation site of serine 22 (P-Q-S(p)-P-P) derived from Human HDAC6 (KLH-conjugated)
Specificity:	The antibody detects endogenous level of HDAC6 only when phosphorylated at serine 22.
Formulation:	Rabbit IgG in phosphate buffered saline (without Mg <sup>2+</sup> and Ca <sup>2+</sup> ), pH 7.4, 150mM NaCl, 0.02% sodium azide and 50% glycerol State: Aff - Purified State: Liquid Ig fraction
Concentration:	lot specific
Purification:	Affinity chromatography using epitope-specific peptide
Conjugation:	Unconjugated
Storage:	Upon receipt, store undiluted (in aliquots) at -20°C. Avoid repeated freezing and thawing.
Stability:	Shelf life: one year from despatch.
Predicted Protein Size:	131 kDa
Gene Name:	histone deacetylase 6
Database Link:	<a href="#">Entrez Gene 10013 Human Q9UBN7</a>



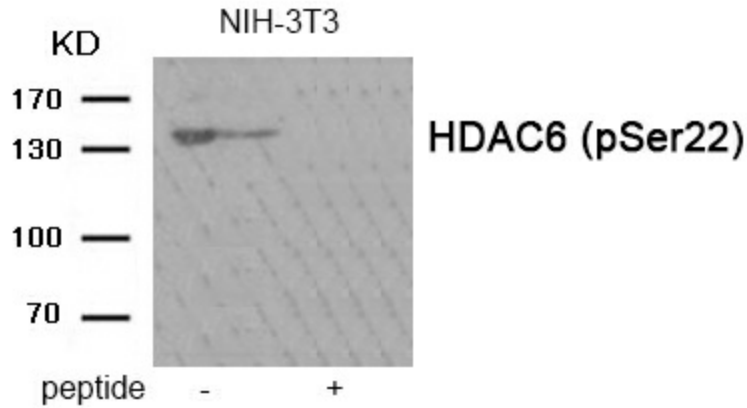
[View online »](#)

**Background:**

Responsible for the deacetylation of lysine residues on the N-terminal part of the core histones (H2A, H2B, H3 and H4). Histone deacetylation gives a tag for epigenetic repression and plays an important role in transcriptional regulation, cell cycle progression and developmental events. Histone deacetylases act via the formation of large multiprotein complexes. By similarity, plays a central role in microtubule-dependent cell motility via deacetylation of tubulin.

**Synonyms:**

Histone deacetylase 6, HD6, KIAA0901, JM21

**Product images:**


Western blot analysis of extracts from NIH-3T3 tissue using HDAC6 (Phospho-Ser22) antibody. The lane on the right is treated with the antigen-specific peptide.