

## Product datasheet for **AP55931PU-N**

### Aurora B (AURKB) pThr232 Rabbit Polyclonal Antibody

#### Product data:

|                         |   |
|-------------------------|---|
| Product Type:           | Primary Antibodies  |
| Applications:           | WB  |
| Recommended Dilution:   | <b>Western blot:</b> 1:500~1:1000.  |
| Reactivity:             | Human, Mouse, Rat   |
| Host:                   | Rabbit  |
| Clonality:              | Polyclonal  |
| Immunogen:              | Peptide sequence around phosphorylation site of threonine 232 (R-K-T(p)-M-C) derived from Human AurB (KLH-conjugated)   |
| Specificity:            | The antibody detects endogenous level of AurB only when phosphorylated at threonine 232.  |
| Formulation:            | Rabbit IgG in phosphate buffered saline (without Mg <sup>2+</sup> and Ca <sup>2+</sup> ), pH 7.4, 150mM NaCl, 0.02% sodium azide and 50% glycerol<br>State: Aff - Purified<br>State: Liquid Ig fraction |
| Concentration:          | lot specific  |
| Purification:           | Affinity chromatography using epitope-specific peptide  |
| Conjugation:            | Unconjugated  |
| Storage:                | Upon receipt, store undiluted (in aliquots) at -20°C.<br>Avoid repeated freezing and thawing.   |
| Stability:              | Shelf life: one year from despatch.   |
| Predicted Protein Size: | 39 kDa  |
| Gene Name:              | aurora kinase B   |
| Database Link:          | <a href="#">Entrez Gene 9212 Human Q96GD4</a>   |



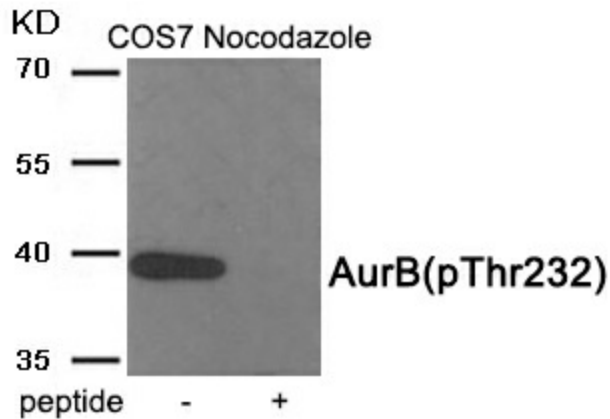
[View online »](#)

**Background:**

Serine/threonine-protein kinase component of the chromosomal passenger complex (CPC), a complex that acts as a key regulator of mitosis. The CPC complex has essential functions at the centromere in ensuring correct chromosome alignment and segregation and is required for chromatin-induced microtubule stabilization and spindle assembly. Involved in the bipolar attachment of spindle microtubules to kinetochores and is a key regulator for the onset of cytokinesis during mitosis. Required for central/midzone spindle assembly and cleavage furrow formation. AURKB phosphorylates the CPC complex subunits BIRC5/survivin, CDCA8/borealin and INCENP. Phosphorylation of INCENP leads to increased AURKB activity.

**Synonyms:**

Aurora-B, Aurora/IPL1-related kinase 2, STK-1, AURKB, AIK2, AIM1, ARK2, STK12

**Product images:**

Western blot analysis of extracts from COS7 cells treated with Nocodazole using Phospho-AurB (Thr232) antibody. The lane on the right is treated with the antigen-specific peptide.