

## Product datasheet for **AP55927PU-N**

### CALM1 pThr79/Ser81 Rabbit Polyclonal Antibody

#### Product data:

Product Type:	Primary Antibodies
Applications:	WB
Recommended Dilution:	<b>Western blot:</b> 1:500~1:1000.
Reactivity:	Human, Mouse, Rat
Host:	Rabbit
Clonality:	Polyclonal
Immunogen:	Peptide sequence around phosphorylation site of threonine79/serine81(K-D-T(p)-D-S(p)-E-E) derived from Human Calmodulin (KLH-conjugated)
Specificity:	The antibody detects endogenous level of Calmodulin only when phosphorylated at threonine 79/serine 81.
Formulation:	Rabbit IgG in phosphate buffered saline (without Mg <sup>2+</sup> and Ca <sup>2+</sup> ), pH 7.4, 150mM NaCl, 0.02% sodium azide and 50% glycerol State: Aff - Purified State: Liquid Ig fraction
Concentration:	lot specific
Purification:	Affinity chromatography using epitope-specific peptide
Conjugation:	Unconjugated
Storage:	Upon receipt, store undiluted (in aliquots) at -20°C. Avoid repeated freezing and thawing.
Stability:	Shelf life: one year from despatch.
Predicted Protein Size:	17 kDa
Gene Name:	calmodulin 1 (phosphorylase kinase, delta)
Database Link:	<a href="#">Entrez Gene 801 Human</a> <a href="#">P0DP23</a>



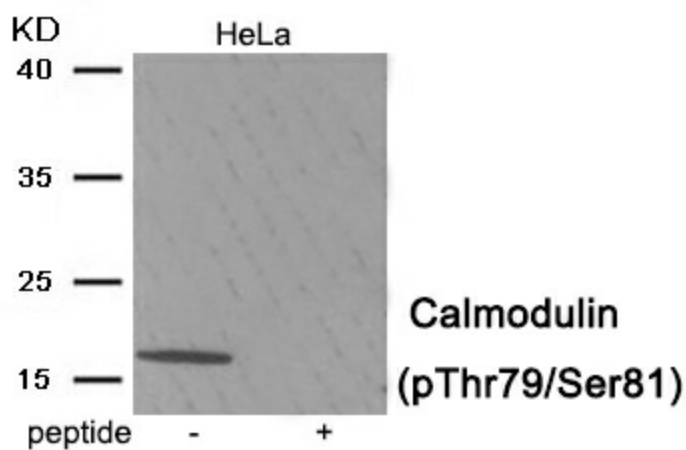
[View online »](#)

**Background:**

Calmodulin mediates the control of a large number of enzymes, ion channels, aquaporins and other proteins by  $\text{Ca}^{2+}$ . Among the enzymes to be stimulated by the calmodulin- $\text{Ca}^{2+}$  complex are a number of protein kinases and phosphatases. Together with CCP110 and centrin, is involved in a genetic pathway that regulates the centrosome cycle and progression through cytokinesis.

**Synonyms:**

CALM1, CALM, CAM, CAM1

**Product images:**

Western blot analysis of extracts from HeLa tissue using Calmodulin (Phospho-Thr79/Ser81) antibody. The lane on the right is treated with the antigen-specific peptide.