

Product datasheet for **AP55926PU-S**

STAT5A pSer725/730 Rabbit Polyclonal Antibody

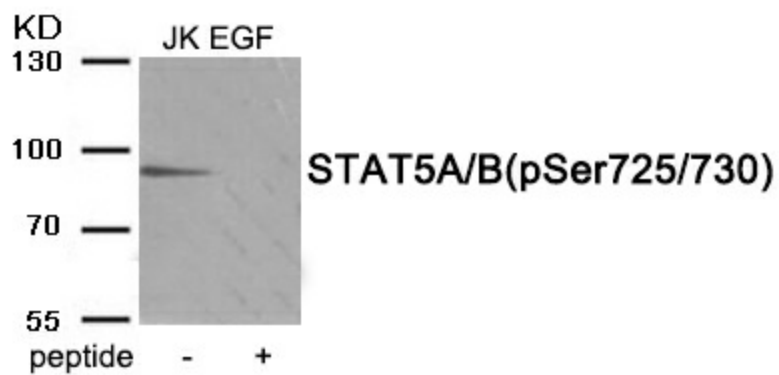
Product data:

Product Type:	Primary Antibodies
Applications:	WB
Recommended Dilution:	Western blot: 1:500~1:1000.
Reactivity:	Human, Mouse, Rat
Host:	Rabbit
Clonality:	Polyclonal
Immunogen:	Peptide sequence around phosphorylation site of serine725/730(A-P-S(p)-P-V) derived from Human STAT5A/B (KLH-conjugated)
Specificity:	The antibody detects endogenous level of STAT5A/B only when phosphorylated at serine 725/serine 730.
Formulation:	Rabbit IgG in phosphate buffered saline (without Mg ²⁺ and Ca ²⁺), pH 7.4, 150mM NaCl, 0.02% sodium azide and 50% glycerol State: Aff - Purified State: Liquid Ig fraction
Concentration:	lot specific
Purification:	Affinity chromatography using epitope-specific peptide
Conjugation:	Unconjugated
Storage:	Upon receipt, store undiluted (in aliquots) at -20°C. Avoid repeated freezing and thawing.
Stability:	Shelf life: one year from despatch.
Predicted Protein Size:	90 kDa
Gene Name:	signal transducer and activator of transcription 5A
Database Link:	Entrez Gene 6776 Human P42229
Background:	Carries out a dual function: signal transduction and activation of transcription. Binds to the GAS element and activates PRL-induced transcription.
Synonyms:	STAT5, STAT-5, STAT-5A, Mammary gland factor, MGF



[View online »](#)

Product images:



Western blot analysis of extracts from Jurkat cells treated with EGF using Phospho-STAT5A/B (Ser725/730) Antibody. The lane on the right is treated with the antigen-specific peptide.