

## Product datasheet for **AP55920PU-S**

### beta 2 Adrenergic Receptor (ADRB2) pSer346 Rabbit Polyclonal Antibody

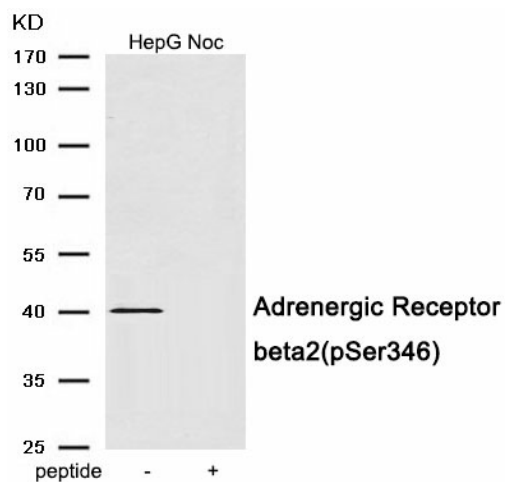
#### Product data:

Product Type:	Primary Antibodies
Applications:	WB
Recommended Dilution:	<b>Western blot:</b> 1:500~1:1000.
Reactivity:	Human
Host:	Rabbit
Clonality:	Polyclonal
Immunogen:	Peptide sequence around phosphorylation site of serine 346 (R-S-S(p)-L-K) derived from Human Adrenergic Receptor beta2 (KLH-conjugated)
Specificity:	The antibody detects endogenous level of Adrenergic Receptor beta2 only when phosphorylated at serine 346.
Formulation:	Rabbit IgG in phosphate buffered saline (without Mg <sup>2+</sup> and Ca <sup>2+</sup> ), pH 7.4, 150mM NaCl, 0.02% sodium azide and 50% glycerol State: Aff - Purified State: Liquid Ig fraction
Concentration:	lot specific
Purification:	Affinity chromatography using epitope-specific peptide
Conjugation:	Unconjugated
Storage:	Upon receipt, store undiluted (in aliquots) at -20°C. Avoid repeated freezing and thawing.
Stability:	Shelf life: one year from despatch.
Predicted Protein Size:	40 kDa
Gene Name:	adrenoceptor beta 2
Database Link:	<a href="#">Entrez Gene 154 Human P07550</a>
Background:	Beta-adrenergic receptors mediate the catecholamine-induced activation of adenylate cyclase through the action of G proteins. The beta-2-adrenergic receptor binds epinephrine with an approximately 30-fold greater affinity than it does norepinephrine.
Synonyms:	ADRB2, ADRB2R, B2AR, Beta-2 adrenoceptor



[View online »](#)

## Product images:



Western blot analysis of extracts from HepG2 cells treated with Nocodazole using Phospho-Adrenergic Receptor beta2 (Ser346) Antibody. The lane on the right is treated with the antigen-specific peptide.