

## Product datasheet for **AP55905PU-S**

### **BMX pTyr566 Rabbit Polyclonal Antibody**

#### **Product data:**

Product Type:	Primary Antibodies
Applications:	WB
Recommended Dilution:	<b>Western blot:</b> 1:500~1:1000.
Reactivity:	Human, Mouse
Host:	Rabbit
Clonality:	Polyclonal
Immunogen:	Peptide sequence around phosphorylation site of Tyrosine566 (D-Q-Y(p)-V-S) derived from Human ETK (KLH-conjugated)
Specificity:	The antibody detects endogenous level of ETK only when phosphorylated at tyrosine 566.
Formulation:	Rabbit IgG in phosphate buffered saline (without Mg <sup>2+</sup> and Ca <sup>2+</sup> ), pH 7.4, 150mM NaCl, 0.02% sodium azide and 50% glycerol State: Aff - Purified State: Liquid Ig fraction
Concentration:	lot specific
Purification:	Affinity chromatography using epitope-specific peptide
Conjugation:	Unconjugated
Storage:	Upon receipt, store undiluted (in aliquots) at -20°C. Avoid repeated freezing and thawing.
Stability:	Shelf life: one year from despatch.
Predicted Protein Size:	78 kDa
Gene Name:	BMX non-receptor tyrosine kinase
Database Link:	<a href="#">Entrez Gene 660 Human P51813</a>



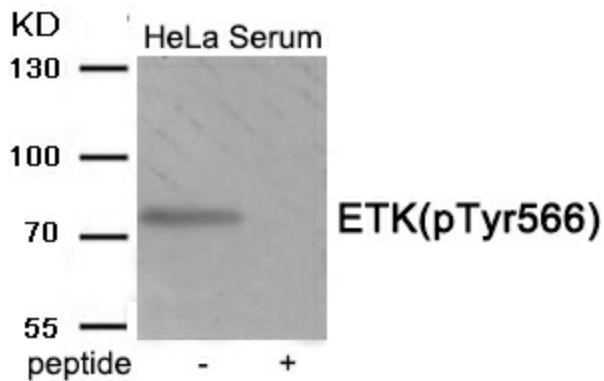
[View online »](#)

**Background:**

Non-receptor tyrosine kinase that plays central but diverse modulatory roles in various signaling processes involved in the regulation of actin reorganization, cell migration, cell proliferation and survival, cell adhesion, and apoptosis. Participates in signal transduction stimulated by growth factor receptors, cytokine receptors, G-protein coupled receptors, antigen receptors and integrins. Induces tyrosine phosphorylation of BCAR1 in response to integrin regulation. Activation of BMX by integrins is mediated by PTK2/FAK1, a key mediator of integrin signaling events leading to the regulation of actin cytoskeleton and cell motility.

**Synonyms:**

NTK38, ETK

**Product images:**

Western blot analysis of extracts from HeLa cells treated with Serum using Phospho-ETK (Tyr566) Antibody. The lane on the right is treated with the antigen-specific peptide.