

## Product datasheet for **AP55903PU-N**

### **SREBP1 (SREBF1) pSer439 Rabbit Polyclonal Antibody**

#### **Product data:**

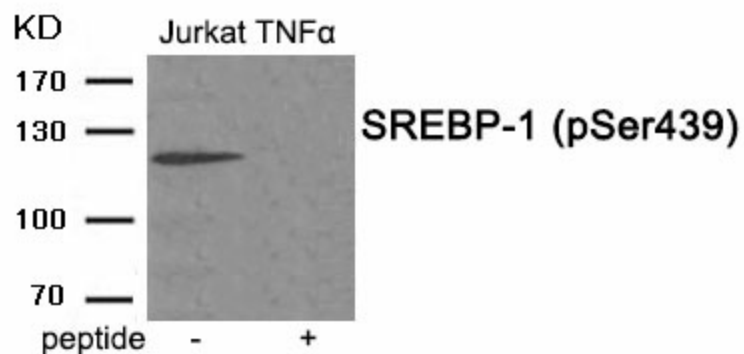
Product Type:	Primary Antibodies
Applications:	WB
Recommended Dilution:	<b>Western blot:</b> 1:500~1:1000.
Reactivity:	Human, Rat
Host:	Rabbit
Clonality:	Polyclonal
Immunogen:	Peptide sequence around phosphorylation site of serine439(Q-S-S(p)-P-L) derived from Human SREBP-1 (KLH-conjugated)
Specificity:	The antibody detects endogenous level of SREBP-1 only when phosphorylated at serine 439.
Formulation:	Rabbit IgG in phosphate buffered saline (without Mg <sup>2+</sup> and Ca <sup>2+</sup> ), pH 7.4, 150mM NaCl, 0.02% sodium azide and 50% glycerol State: Aff - Purified State: Liquid Ig fraction
Concentration:	lot specific
Purification:	Affinity chromatography using epitope-specific peptide
Conjugation:	Unconjugated
Storage:	Upon receipt, store undiluted (in aliquots) at -20°C. Avoid repeated freezing and thawing.
Stability:	Shelf life: one year from despatch.
Predicted Protein Size:	122 kDa
Gene Name:	sterol regulatory element binding transcription factor 1
Database Link:	<a href="#">Entrez Gene 6720 Human P36956</a>
Background:	Transcriptional activator required for lipid homeostasis. Regulates transcription of the LDL receptor gene as well as the fatty acid and to a lesser degree the cholesterol synthesis pathway By similarity. Binds to the sterol regulatory element 1 (SRE-1) (5'-ATCACCCAC-3'). Has dual sequence specificity binding to both an E-box motif (5'-ATCACGTGA-3') and to SRE-1 (5'-ATCACCCAC-3').



[View online >](#)

Synonyms: SREBP-1, BHLHD1

### Product images:



Western blot analysis of extracts from Jurkat cells treated with TNF using Phospho-SREBP-1 (Ser439) antibody. The lane on the right is treated with the antigen-specific peptide.