

## Product datasheet for **AP55894PU-N**

### **BCL2 pSer287 Rabbit Polyclonal Antibody**

#### **Product data:**

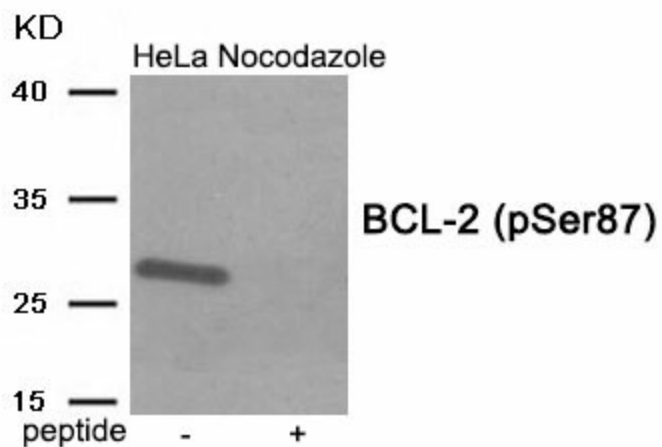
Product Type:	Primary Antibodies
Applications:	WB
Recommended Dilution:	<b>Western blot:</b> 1:500~1:1000.
Reactivity:	Human, Mouse, Rat
Host:	Rabbit
Clonality:	Polyclonal
Immunogen:	Peptide sequence around phosphorylation site of serine 87 (A-L-S(p)-P-V) derived from Human BCL-2 (KLH-conjugated)
Specificity:	The antibody detects endogenous level of BCL-2 only when phosphorylated at serine 87.
Formulation:	Rabbit IgG in phosphate buffered saline (without Mg <sup>2+</sup> and Ca <sup>2+</sup> ), pH 7.4, 150mM NaCl, 0.02% sodium azide and 50% glycerol State: Aff - Purified State: Liquid Ig fraction
Concentration:	lot specific
Purification:	Affinity chromatography using epitope-specific peptide
Conjugation:	Unconjugated
Storage:	Upon receipt, store undiluted (in aliquots) at -20°C. Avoid repeated freezing and thawing.
Stability:	Shelf life: one year from despatch.
Predicted Protein Size:	28 kDa
Gene Name:	B-cell CLL/lymphoma 2
Database Link:	<a href="#">Entrez Gene 596 Human P10415</a>
Background:	Suppresses apoptosis in a variety of cell systems including factor-dependent lymphohematopoietic and neural cells. Regulates cell death by controlling the mitochondrial membrane permeability. Appears to function in a feedback loop system with caspases. Inhibits caspase activity either by preventing the release of cytochrome c from the mitochondria and/or by binding to the apoptosis-activating factor (APAF-1).



[View online »](#)

Synonyms: BCL2, Bcl-2 alpha

### Product images:



Western blot analysis of extracts from HeLa cells treated with Nocodazole using Phospho-BCL-2 (Ser87) antibody. The lane on the right is treated with the antigen-specific peptide.