

## Product datasheet for **AP55890PU-S**

### Sodium Potassium ATPase (ATP1A1) pSer16 Rabbit Polyclonal Antibody

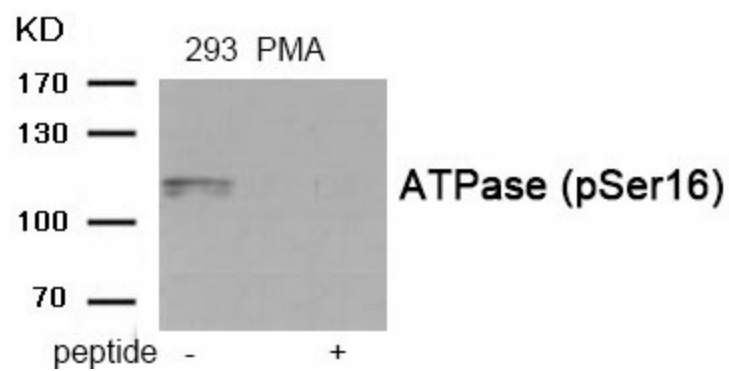
#### Product data:

Product Type:	Primary Antibodies
Applications:	WB
Recommended Dilution:	<b>Western blot:</b> 1:500~1:1000.
Reactivity:	Human, Mouse, Rat
Host:	Rabbit
Clonality:	Polyclonal
Immunogen:	Peptide sequence around phosphorylation site of serine 16 (A-V-S(p)-E-Q) derived from Human ATPase (KLH-conjugated)
Specificity:	The antibody detects endogenous level of ATPase only when phosphorylated at serine 16.
Formulation:	Rabbit IgG in phosphate buffered saline (without Mg <sup>2+</sup> and Ca <sup>2+</sup> ), pH 7.4, 150mM NaCl, 0.02% sodium azide and 50% glycerol State: Aff - Purified State: Liquid Ig fraction
Concentration:	lot specific
Purification:	Affinity chromatography using epitope-specific peptide
Conjugation:	Unconjugated
Storage:	Upon receipt, store undiluted (in aliquots) at -20°C. Avoid repeated freezing and thawing.
Stability:	Shelf life: one year from despatch.
Predicted Protein Size:	112 kDa
Gene Name:	ATPase Na <sup>+</sup> /K <sup>+</sup> transporting subunit alpha 1
Database Link:	<a href="#">Entrez Gene 476 Human P05023</a>
Background:	This is the catalytic component of the active enzyme, which catalyzes the hydrolysis of ATP coupled with the exchange of sodium and potassium ions across the plasma membrane. This action creates the electrochemical gradient of sodium and potassium ions, providing the energy for active transport of various nutrients.
Synonyms:	Sodium pump ATPase subunit alpha-1, Sodium/potassium-transporting ATPase subunit alpha



[View online >](#)

## Product images:



Western blot analysis of extracts from 293 cells treated with PMA using Phospho-ATPase (Ser16) Antibody. The lane on the right is treated with the antigen-specific peptide.