

## Product datasheet for **AP55882PU-N**

### SIRT1 pSer47 Rabbit Polyclonal Antibody

#### Product data:

Product Type:	Primary Antibodies
Applications:	WB
Recommended Dilution:	<b>Western blot:</b> 1:500~1:1000.
Reactivity:	Human, Mouse
Host:	Rabbit
Clonality:	Polyclonal
Immunogen:	Peptide sequence around phosphorylation site of serine 47(E-R-S(p)-P-G) derived from Human SirT1 (KLH-conjugated)
Specificity:	The antibody detects endogenous level of SirT1 only when phosphorylated at serine 47.
Formulation:	Rabbit IgG in phosphate buffered saline (without Mg <sup>2+</sup> and Ca <sup>2+</sup> ), pH 7.4, 150mM NaCl, 0.02% sodium azide and 50% glycerol State: Aff - Purified State: Liquid Ig fraction
Concentration:	lot specific
Purification:	Affinity chromatography using epitope-specific peptide
Conjugation:	Unconjugated
Storage:	Upon receipt, store undiluted (in aliquots) at -20°C. Avoid repeated freezing and thawing.
Stability:	Shelf life: one year from despatch.
Predicted Protein Size:	110 kDa
Gene Name:	sirtuin 1
Database Link:	<a href="#">Entrez Gene 23411 Human Q96EB6</a>



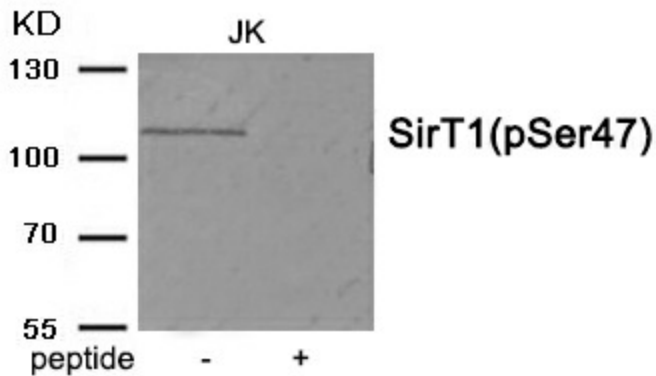
[View online »](#)

**Background:**

NAD-dependent protein deacetylase that links transcriptional regulation directly to intracellular energetics and participates in the coordination of several separated cellular functions such as cell cycle, response to DNA damage, metabolism, apoptosis and autophagy. Can modulate chromatin function through deacetylation of histones and can promote alterations in the methylation of histones and DNA, leading to transcriptional repression. Deacetylates a broad range of transcription factors and coregulators, thereby regulating target gene expression positively and negatively.

**Synonyms:**

SIRT-1, SIR2-like protein 1, SIR2L1, sirtuin type 1, sirtuin 1, sirtuin-1, SIR2alpha

**Product images:**

Western blot analysis of extracts from JK tissue using SirT1 (Phospho-Ser47) antibody. The lane on the right is treated with the antigen-specific peptide.