

Product datasheet for **AP55880PU-S**

SMAD2 pSer250 Rabbit Polyclonal Antibody

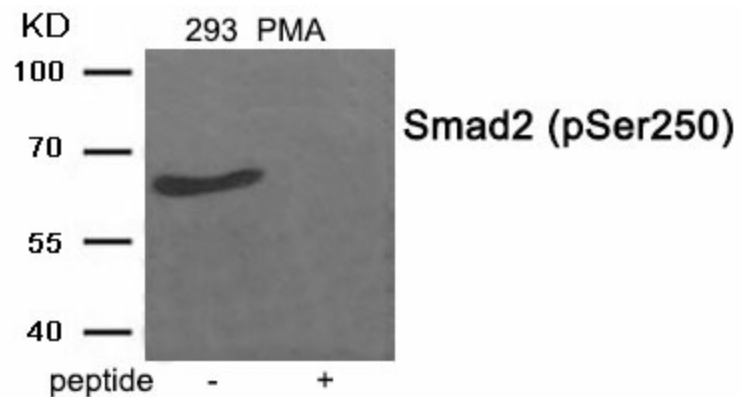
Product data:

Product Type:	Primary Antibodies
Applications:	WB
Recommended Dilution:	Western blot: 1:500~1:1000.
Reactivity:	Human, Mouse, Rat
Host:	Rabbit
Clonality:	Polyclonal
Immunogen:	Peptide sequence around phosphorylation site of serine250(E-L-S(p)-P-T) derived from Human Smad2 (KLH-conjugated)
Specificity:	The antibody detects endogenous level of Smad2 only when phosphorylated at serine 250.
Formulation:	Rabbit IgG in phosphate buffered saline (without Mg ²⁺ and Ca ²⁺), pH 7.4, 150mM NaCl, 0.02% sodium azide and 50% glycerol State: Aff - Purified State: Liquid Ig fraction
Concentration:	lot specific
Purification:	Affinity chromatography using epitope-specific peptide
Conjugation:	Unconjugated
Storage:	Upon receipt, store undiluted (in aliquots) at -20°C. Avoid repeated freezing and thawing.
Stability:	Shelf life: one year from despatch.
Predicted Protein Size:	65 kDa
Gene Name:	SMAD family member 2
Database Link:	Entrez Gene 4087 Human Q15796
Background:	Transcriptional modulator activated by TGF-beta and activin type 1 receptor kinase. SMAD2 is a receptor-regulated SMAD (R-SMAD). May act as a tumor suppressor in colorectal carcinoma.
Synonyms:	SMAD family member 2, SMAD-2, SMAD 2, MADH2, MAD homolog 2, MADR2, Mad-related protein 2, JV18-1



[View online »](#)

Product images:



Western blot analysis of extracts from 293 cells treated with PMA using Phospho-Smad2 (Ser250) Antibody. The lane on the right is treated with the antigen-specific peptide.