

## Product datasheet for **AP55872PU-S**

### SMAD3 pSer204 Rabbit Polyclonal Antibody

#### Product data:

Product Type:	Primary Antibodies
Applications:	WB
Recommended Dilution:	<b>Western blot:</b> 1:500~1:1000.
Reactivity:	Human, Mouse, Rat
Host:	Rabbit
Clonality:	Polyclonal
Immunogen:	Peptide sequence around phosphorylation site of serine204(A-G-S(p)-P-N) derived from Human Smad3 (KLH-conjugated)
Specificity:	The antibody detects endogenous level of Smad3 only when phosphorylated at serine 204.
Formulation:	Rabbit IgG in phosphate buffered saline (without Mg <sup>2+</sup> and Ca <sup>2+</sup> ), pH 7.4, 150mM NaCl, 0.02% sodium azide and 50% glycerol State: Aff - Purified State: Liquid Ig fraction
Concentration:	lot specific
Purification:	Affinity chromatography using epitope-specific peptide
Conjugation:	Unconjugated
Storage:	Upon receipt, store undiluted (in aliquots) at -20°C. Avoid repeated freezing and thawing.
Stability:	Shelf life: one year from despatch.
Predicted Protein Size:	48 kDa
Gene Name:	SMAD family member 3
Database Link:	<a href="#">Entrez Gene 4088 Human P84022</a>



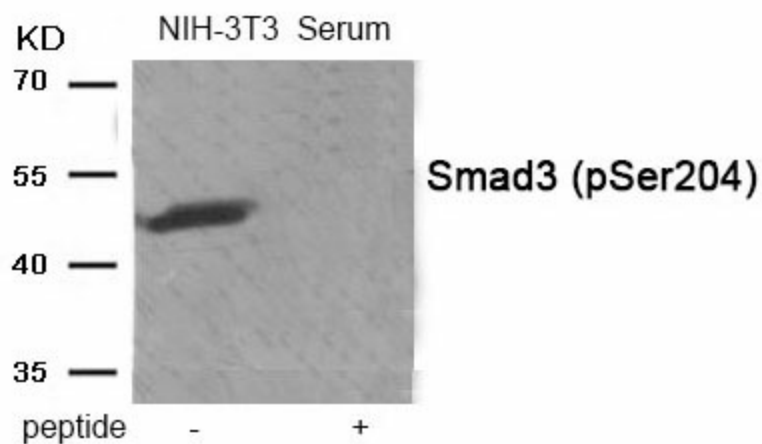
[View online »](#)

**Background:**

Smad3 encoded by this gene belongs to the SMAD, a family of proteins similar to the gene products of the *Drosophila* gene 'mothers against decapentaplegic' (Mad) and the *C. elegans* gene Sma. SMAD proteins are signal transducers and transcriptional modulators that mediate multiple signaling pathways. This protein functions as a transcriptional modulator activated by transforming growth factor-beta and is thought to play a role in the regulation of carcinogenesis.

**Synonyms:**

SMAD family member 3, SMAD 3, SMAD-3, Mad3, MAD-3, MADH3, MAD homolog 3, JV15-2

**Product images:**

Western blot analysis of extracts from NIH-3T3 cells treated with Serum using Phospho-Smad3 (Ser204) Antibody. The lane on the right is treated with the antigen-specific peptide.